

Serpin B5 Antibody

Purified Rabbit Polyclonal Antibody (Pab)

Catalog # AP51505

Product Information

Application	WB
Primary Accession	P36952
Reactivity	Human, Mouse, Rat
Host	Rabbit
Clonality	Polyclonal
Calculated MW	42100

Additional Information

Gene ID	5268
Other Names	Serpin B5, Maspin, Peptidase inhibitor 5, PI-5, SERPINB5, PI5
Target/Specificity	KLH-conjugated synthetic peptide encompassing a sequence within the center region of human Serpin B5. The exact sequence is proprietary.
Dilution	WB~~ 1:1000
Format	0.01M PBS, pH 7.2, 0.09% (W/V) Sodium azide, Glycerol 50%
Storage	Store at -20 °C.Stable for 12 months from date of receipt

Protein Information

Name	SERPINB5
Synonyms	PI5
Function	Tumor suppressor. It blocks the growth, invasion, and metastatic properties of mammary tumors. As it does not undergo the S (stressed) to R (relaxed) conformational transition characteristic of active serpins, it exhibits no serine protease inhibitory activity.
Cellular Location	Secreted, extracellular space.
Tissue Location	Normal mammary epithelial cells.

Background

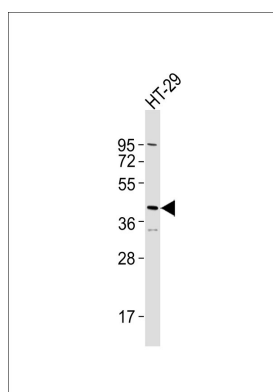
Tumor suppressor. It blocks the growth, invasion, and metastatic properties of mammary tumors. As it

does not undergo the S (stressed) to R (relaxed) conformational transition characteristic of active serpins, it exhibits no serine protease inhibitory activity.

References

Zou Z.,et al.Science 263:526-529(1994).
Ota T.,et al.Nat. Genet. 36:40-45(2004).
Nusbaum C.,et al.Nature 437:551-555(2005).
Bechtel S.,et al.BMC Genomics 8:399-399(2007).
Pemberton P.A.,et al.J. Biol. Chem. 270:15832-15837(1995).

Images



Anti-Serpin B5 Antibody at 1:1000 dilution + HT-29 whole cell lysates. Lysates/proteins at 20 µg per lane. Secondary Goat Anti-Rabbit IgG, (H+L), Peroxidase conjugated at 1/10000 dilution. Predicted band size : 42 kDa. Blocking/Dilution buffer: 5% NFD/MTBST.

Please note: All products are 'FOR RESEARCH USE ONLY. NOT FOR USE IN DIAGNOSTIC OR THERAPEUTIC PROCEDURES'.