

# Serpin B4 Antibody

Purified Rabbit Polyclonal Antibody (Pab)

Catalog # AP51504

## Product Information

---

<b>Application</b>	WB
<b>Primary Accession</b>	<a href="#">P48594</a>
<b>Reactivity</b>	Human, Mouse, Rat
<b>Host</b>	Rabbit
<b>Clonality</b>	Polyclonal
<b>Calculated MW</b>	44854

## Additional Information

---

<b>Gene ID</b>	6318
<b>Other Names</b>	Serpin B4, Leupin, Peptidase inhibitor 11, PI-11, Squamous cell carcinoma antigen 2, SCCA-2, SERPINB4, PI11, SCCA2
<b>Target/Specificity</b>	KLH-conjugated synthetic peptide encompassing a sequence within the center region of human Serpin B4. The exact sequence is proprietary.
<b>Dilution</b>	WB~~ 1:1000
<b>Format</b>	0.01M PBS, pH 7.2, 0.09% (W/V) Sodium azide, Glycerol 50%
<b>Storage</b>	Store at -20 °C.Stable for 12 months from date of receipt

## Protein Information

---

<b>Name</b>	SERPINB4
<b>Synonyms</b>	PI11, SCCA2
<b>Function</b>	May act as a protease inhibitor to modulate the host immune response against tumor cells.
<b>Cellular Location</b>	Cytoplasm. Note=Seems to also be secreted in plasma by cancerous cells but at a low level
<b>Tissue Location</b>	Squamous cells.

## Background

---

May act as a protease inhibitor to modulate the host immune response against tumor cells.

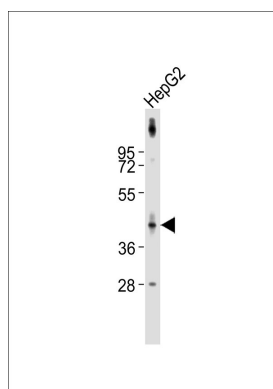
## References

---

Barnes R.C.,et al.FEBS Lett. 373:61-65(1995).  
Schneider S.S.,et al.Proc. Natl. Acad. Sci. U.S.A. 92:3147-3151(1995).  
Hamada K.,et al.Biochim. Biophys. Acta 1518:124-131(2001).  
Ota T.,et al.Nat. Genet. 36:40-45(2004).  
Bienvenut W.V.,et al.Submitted (FEB-2008) to UniProtKB.

## Images

---



Anti-Serpin B4 Antibody at 1:1000 dilution + HepG2 whole cell lysates. Lysates/proteins at 20 µg per lane. Secondary Goat Anti-Rabbit IgG, (H+L), Peroxidase conjugated at 1/10000 dilution. Predicted band size : 45 kDa. Blocking/Dilution buffer: 5% NFDM/TBST.

Please note: All products are 'FOR RESEARCH USE ONLY. NOT FOR USE IN DIAGNOSTIC OR THERAPEUTIC PROCEDURES'.