

# RPS2 Antibody

Purified Rabbit Polyclonal Antibody (Pab)

Catalog # AP51489

## Product Information

Application	WB
Primary Accession	<a href="#">P15880</a>
Reactivity	Human, Mouse, Rat
Host	Rabbit
Clonality	Polyclonal
Calculated MW	31324

## Additional Information

Gene ID	6187
Other Names	40S ribosomal protein S2, 40S ribosomal protein S4, Protein LLRep3, RPS2, RPS4
Target/Specificity	KLH-conjugated synthetic peptide encompassing a sequence within the C-term region of human RPS2. The exact sequence is proprietary.
Dilution	WB~~ 1:1000
Format	0.01M PBS, pH 7.2, 0.09% (W/V) Sodium azide, Glycerol 50%
Storage	Store at -20 °C.Stable for 12 months from date of receipt

## Protein Information

Name	RPS2
Synonyms	RPS4
Function	<p>Component of the ribosome, a large ribonucleoprotein complex responsible for the synthesis of proteins in the cell (PubMed:<a href="#">23636399</a>). The small ribosomal subunit (SSU) binds messenger RNAs (mRNAs) and translates the encoded message by selecting cognate aminoacyl-transfer RNA (tRNA) molecules (PubMed:<a href="#">23636399</a>). The large subunit (LSU) contains the ribosomal catalytic site termed the peptidyl transferase center (PTC), which catalyzes the formation of peptide bonds, thereby polymerizing the amino acids delivered by tRNAs into a polypeptide chain (PubMed:<a href="#">23636399</a>). The nascent polypeptides leave the ribosome through a tunnel in the LSU and interact with protein factors that function in enzymatic processing, targeting, and the membrane insertion of nascent chains at the exit of the ribosomal tunnel (PubMed:<a href="#">23636399</a>). Plays a role in the assembly and function of the 40S ribosomal subunit (By similarity). Mutations in this protein affects the</p>

control of translational fidelity (By similarity). Involved in nucleolar processing of pre-18S ribosomal RNA and ribosome assembly (By similarity).

### Cellular Location

Cytoplasm. Nucleus, nucleolus. Note=Probably localized to nucleolus and cytoplasm in complex with ZNF277.

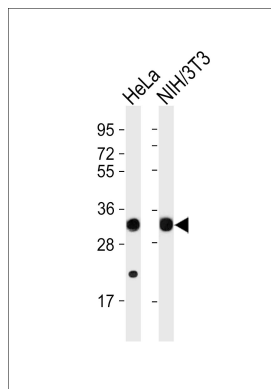
## References

---

Slynn G.,et al.Nucleic Acids Res. 18:681-681(1990).  
Ota T.,et al.Nat. Genet. 36:40-45(2004).  
Mural R.J.,et al.Submitted (SEP-2005) to the EMBL/GenBank/DDBJ databases.  
Vladimirov S.N.,et al.Eur. J. Biochem. 239:144-149(1996).  
Swiercz R.,et al.Biochem. J. 386:85-91(2005).

## Images

---



All lanes : Anti-RPS2 Antibody at 1:1000 dilution Lane 1: HeLa whole cell lysates Lane 2: NIH/3T3 whole cell lysates Lysates/proteins at 20 µg per lane. Secondary Goat Anti-Rabbit IgG, (H+L), Peroxidase conjugated at 1/10000 dilution Predicted band size : 31 kDa Blocking/Dilution buffer: 5% NFDM/TBST.

Please note: All products are 'FOR RESEARCH USE ONLY. NOT FOR USE IN DIAGNOSTIC OR THERAPEUTIC PROCEDURES'.