

MRPS35 Antibody

Purified Rabbit Polyclonal Antibody (Pab)
Catalog # AP51368

Product Information

Application	WB
Primary Accession	P82673
Reactivity	Human
Host	Rabbit
Clonality	Polyclonal
Calculated MW	36844

Additional Information

Gene ID	60488
Other Names	28S ribosomal protein S35, mitochondrial, MRP-S35, S35mt, 28S ribosomal protein S28, mitochondrial, MRP-S28, S28mt, MRPS35 (HGNC:16635)
Target/Specificity	KLH-conjugated synthetic peptide encompassing a sequence within the center region of human MRPS35. The exact sequence is proprietary.
Dilution	WB~~ 1:1000
Format	0.01M PBS, pH 7.2, 0.09% (W/V) Sodium azide, Glycerol 50%
Storage	Store at -20 °C.Stable for 12 months from date of receipt

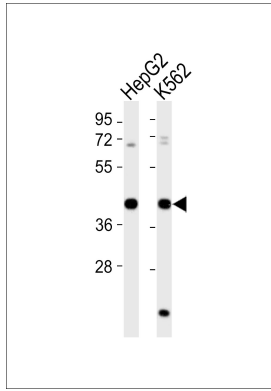
Protein Information

Name	MRPS35 (HGNC:16635)
Cellular Location	Mitochondrion.

References

Huang C.,et al.Submitted (SEP-1999) to the EMBL/GenBank/DDBJ databases.
Ota T.,et al.Nat. Genet. 36:40-45(2004).
Otsuki T.,et al.DNA Res. 12:117-126(2005).
Bechtel S.,et al.BMC Genomics 8:399-399(2007).
Zhao Z.,et al.Submitted (MAY-1998) to the EMBL/GenBank/DDBJ databases.

Images



All lanes : Anti-MRPS35 Antibody at 1:1000 dilution Lane 1: HepG2 whole cell lysates Lane 2: K562 whole cell lysates Lysates/proteins at 20 μ g per lane. Secondary Goat Anti-Rabbit IgG, (H+L), Peroxidase conjugated at 1/10000 dilution Predicted band size : 37 kDa Blocking/Dilution buffer: 5% NFDN/TBST.

Please note: All products are 'FOR RESEARCH USE ONLY. NOT FOR USE IN DIAGNOSTIC OR THERAPEUTIC PROCEDURES'.