

Cytokeratin 18 Antibody

Purified Rabbit Polyclonal Antibody (Pab)

Catalog # AP51309

Product Information

Application	WB
Primary Accession	P05783
Reactivity	Human
Host	Rabbit
Clonality	Polyclonal
Calculated MW	48058

Additional Information

Gene ID	3875
Other Names	Keratin, type I cytoskeletal 18, Cell proliferation-inducing gene 46 protein, Cytokeratin-18, CK-18, Keratin-18, K18, KRT18, CYK18
Target/Specificity	KLH-conjugated synthetic peptide encompassing a sequence within the C-term region of human Cytokeratin 18. The exact sequence is proprietary.
Dilution	WB~~ 1:4000
Format	0.01M PBS, pH 7.2, 0.09% (W/V) Sodium azide, Glycerol 50%
Storage	Store at -20 °C.Stable for 12 months from date of receipt

Protein Information

Name	KRT18 (HGNC:6430)
Synonyms	CYK18
Function	Required for the formation of KRT8/KRT18 filaments that are involved in ARHGEF40-mediated actin stress fiber formation and tensional force-induced stress fiber formation and reinforcement (PubMed: 26823019). Also acts downstream of ROCK kinase activation as part of a positive feedback mechanism in response to cellular mechanical stress loading (PubMed: 26823019). Organization and orientation of KRT18 filaments are responsible for the properly elongated morphology of epithelial tubules (By similarity). Involved in the uptake of thrombin-antithrombin complexes by hepatic cells (By similarity). When phosphorylated, plays a role in filament reorganization. Involved in the delivery of mutated CFTR to the plasma membrane. Together with KRT8, is involved in interleukin-6 (IL-6)- mediated barrier protection.

Cellular Location	Nucleus matrix {ECO:0000250 UniProtKB:Q5BJY9}. Cytoplasm, perinuclear region. Nucleus, nucleolus. Cytoplasm {ECO:0000250 UniProtKB:Q5BJY9}
Tissue Location	Expressed in colon, placenta, liver and very weakly in exocervix. Increased expression observed in lymph nodes of breast carcinoma.

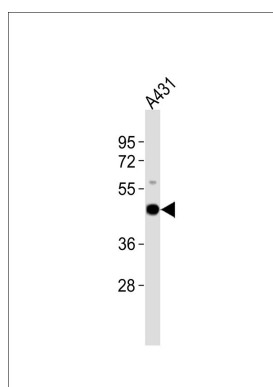
Background

Involved in the uptake of thrombin-antithrombin complexes by hepatic cells (By similarity). When phosphorylated, plays a role in filament reorganization. Involved in the delivery of mutated CFTR to the plasma membrane. Together with KRT8, is involved in interleukin-6 (IL-6)-mediated barrier protection.

References

Oshima R.G.,et al.Differentiation 33:61-68(1986).
Kim J.W.,et al.Submitted (SEP-2004) to the EMBL/GenBank/DDBJ databases.
Kalnina N.,et al.Submitted (OCT-2004) to the EMBL/GenBank/DDBJ databases.
Suzuki Y.,et al.Submitted (APR-2005) to the EMBL/GenBank/DDBJ databases.
Kulesh D.A.,et al.Mol. Cell. Biol. 8:1540-1550(1988).

Images



Anti-Cytokeratin 18 Antibody at 1:4000 dilution + A431 whole cell lysates. Lysates/proteins at 20 µg per lane. Secondary Goat Anti-Rabbit IgG, (H+L), Peroxidase conjugated at 1/10000 dilution. Predicted band size : 48 kDa. Blocking/Dilution buffer: 5% NFDM/TBST.

Please note: All products are 'FOR RESEARCH USE ONLY. NOT FOR USE IN DIAGNOSTIC OR THERAPEUTIC PROCEDURES'.