

HCCS Antibody

Purified Rabbit Polyclonal Antibody (Pab)

Catalog # AP51254

Product Information

Application	WB
Primary Accession	P53701
Reactivity	Human, Mouse, Rat
Host	Rabbit
Clonality	Polyclonal
Calculated MW	30602

Additional Information

Gene ID	3052
Other Names	Cytochrome c-type heme lyase, CCHL, Holocytochrome c-type synthase, HCCS, CCHL
Target/Specificity	KLH-conjugated synthetic peptide encompassing a sequence within the center region of human HCCS. The exact sequence is proprietary.
Dilution	WB~~ 1:1000
Format	0.01M PBS, pH 7.2, 0.09% (W/V) Sodium azide, Glycerol 50%
Storage	Store at -20 °C.Stable for 12 months from date of receipt

Protein Information

Name	HCCS (HGNC:4837)
Synonyms	CCHL
Function	Lyase that catalyzes the covalent linking of the heme group to the cytochrome C apoprotein to produce the mature functional cytochrome.
Cellular Location	Mitochondrion inner membrane. Membrane; Lipid-anchor

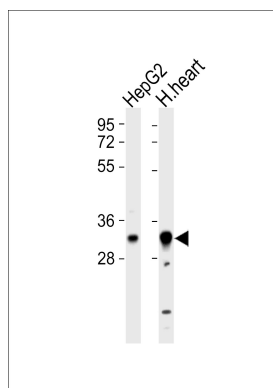
Background

Links covalently the heme group to the apoprotein of cytochrome c (By similarity).

References

Schaefer L.,et al.Genomics 34:166-172(1996).
van den Veyver I.B.,et al.Am. J. Med. Genet. 78:179-181(1998).
Ota T.,et al.Nat. Genet. 36:40-45(2004).
Mural R.J.,et al.Submitted (JUL-2005) to the EMBL/GenBank/DDBJ databases.
Burkard T.R.,et al.BMC Syst. Biol. 5:17-17(2011).

Images



All lanes : Anti-HCCS Antibody at 1:1000 dilution Lane 1:
HepG2 whole cell lysates Lane 2: human heart lysates
Lysates/proteins at 20 µg per lane. Secondary Goat
Anti-Rabbit IgG, (H+L), Peroxidase conjugated at 1/10000
dilution Predicted band size : 31 kDa Blocking/Dilution
buffer: 5% NFDM/TBST.

Please note: All products are 'FOR RESEARCH USE ONLY. NOT FOR USE IN DIAGNOSTIC OR THERAPEUTIC PROCEDURES'.