

EEA1 Antibody

Purified Rabbit Polyclonal Antibody (Pab)
Catalog # AP51177

Product Information

Application	WB
Primary Accession	Q15075
Reactivity	Human, Mouse, Rat
Host	Rabbit
Clonality	Polyclonal
Calculated MW	162466

Additional Information

Gene ID	8411
Other Names	Early endosome antigen 1, Endosome-associated protein p162, Zinc finger FYVE domain-containing protein 2, EEA1, ZFYVE2
Target/Specificity	KLH-conjugated synthetic peptide encompassing a sequence within the N-term region of human EEA1. The exact sequence is proprietary.
Dilution	WB~~ 1:1000
Format	0.01M PBS, pH 7.2, 0.09% (W/V) Sodium azide, Glycerol 50%
Storage	Store at -20 °C. Stable for 12 months from date of receipt

Protein Information

Name	EEA1 (HGNC:3185)
Synonyms	ZFYVE2
Function	Binds phospholipid vesicles containing phosphatidylinositol 3-phosphate and participates in endosomal trafficking.
Cellular Location	Early endosome membrane; Peripheral membrane protein. Cytoplasm

Background

Binds phospholipid vesicles containing phosphatidylinositol 3-phosphate and participates in endosomal trafficking.

References

Mu F.-T., et al. *J. Biol. Chem.* 270:13503-13511(1995).

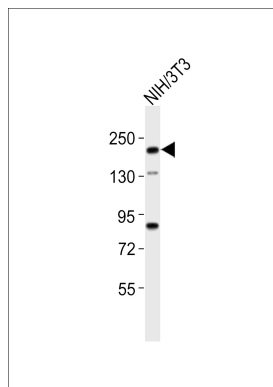
Seelig H.P., et al. Submitted (APR-1994) to the EMBL/GenBank/DDBJ databases.

Scherer S.E., et al. *Nature* 440:346-351(2006).

Lubec G., et al. Submitted (DEC-2008) to UniProtKB.

Simonsen A., et al. *Nature* 394:494-498(1998).

Images



Anti-EEA1 Antibody at 1:1000 dilution + NIH/3T3 whole cell lysates. Lysates/proteins at 20 µg per lane. Secondary Goat Anti-Rabbit IgG, (H+L), Peroxidase conjugated at 1/10000 dilution. Predicted band size : 162 kDa. Blocking/Dilution buffer: 5% NFD/MTBST.

Please note: All products are 'FOR RESEARCH USE ONLY. NOT FOR USE IN DIAGNOSTIC OR THERAPEUTIC PROCEDURES'.