

## BTG1 Antibody (Center)

Affinity Purified Rabbit Polyclonal Antibody (Pab)

Catalog # AP5111c

### Product Information

---

<b>Application</b>	WB, IHC-P, E
<b>Primary Accession</b>	<a href="#">P62324</a>
<b>Other Accession</b>	<a href="#">P27049</a> , <a href="#">Q04211</a> , <a href="#">P78543</a> , <a href="#">Q63073</a> , <a href="#">P62325</a> , <a href="#">P34743</a> , <a href="#">P53348</a>
<b>Reactivity</b>	Human, Mouse
<b>Predicted</b>	Bovine, Chicken, Rat
<b>Host</b>	Rabbit
<b>Clonality</b>	Polyclonal
<b>Isotype</b>	Rabbit IgG
<b>Clone Names</b>	RB26174
<b>Calculated MW</b>	19209
<b>Antigen Region</b>	92-118

### Additional Information

---

<b>Gene ID</b>	694
<b>Other Names</b>	Protein BTG1, B-cell translocation gene 1 protein, BTG1
<b>Target/Specificity</b>	This BTG1 antibody is generated from rabbits immunized with a KLH conjugated synthetic peptide between 92-118 amino acids from the Central region of human BTG1.
<b>Dilution</b>	WB~~1:1000 IHC-P~~1:100~500 E~~Use at an assay dependent concentration.
<b>Format</b>	Purified polyclonal antibody supplied in PBS with 0.05% (V/V) Proclin 300. This antibody is purified through a protein A column, followed by peptide affinity purification.
<b>Storage</b>	Maintain refrigerated at 2-8°C for up to 2 weeks. For long term storage store at -20°C in small aliquots to prevent freeze-thaw cycles.
<b>Precautions</b>	BTG1 Antibody (Center) is for research use only and not for use in diagnostic or therapeutic procedures.

### Protein Information

---

<b>Name</b>	BTG1
<b>Function</b>	Anti-proliferative protein.

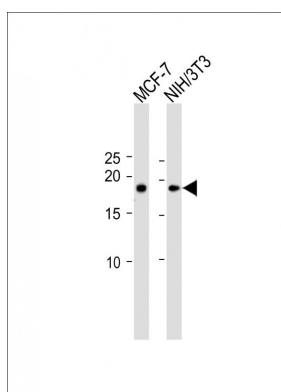
## Background

BTG1 is a member of an anti-proliferative gene family that regulates cell growth and differentiation. Expression of this gene is highest in the G0/G1 phases of the cell cycle and downregulated when cells progressed through G1. The encoded protein interacts with several nuclear receptors, and functions as a coactivator of cell differentiation. This locus has been shown to be involved in a t(8;12)(q24;q22) chromosomal translocation in a case of B-cell chronic lymphocytic leukemia.

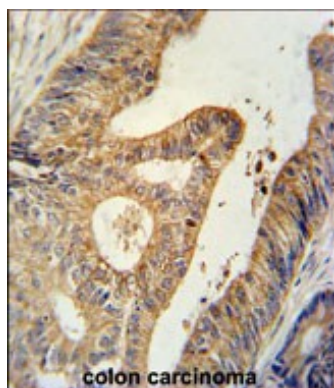
## References

Camina-Tato, M., et al. J. Neuroimmunol. 213 (1-2), 142-147 (2009) Zemunik, T., et al. Croat. Med. J. 50(1):23-33(2009) Takahashi, N., et al. Exp. Hematol. 36(12):1760-1770(2008)

## Images



All lanes: Anti-BTG1 Antibody (Center) at 1:1000 dilution  
Lane 1: MCF-7 whole cell lysate Lane 2: NIH/3T3 whole cell lysate Lysates/proteins at 20 µg per lane. Secondary: Goat Anti-Rabbit IgG, (H+L), Peroxidase conjugated (ASP1615) at 1/15000 dilution. Observed band size: 19 KDa Blocking/Dilution buffer: 5% NFDM/TBST.



BTG1 Antibody (Center) (Cat. #AP5111c) immunohistochemistry analysis in formalin fixed and paraffin embedded human colon carcinoma followed by peroxidase conjugation of the secondary antibody and DAB staining. This data demonstrates the use of the BTG1 Antibody (Center) for immunohistochemistry. Clinical relevance has not been evaluated.

## Citations

- [miR-511 promotes the proliferation of human hepatoma cells by targeting the 3'UTR of B cell translocation gene 1 \(BTG1\) mRNA.](#)

Please note: All products are 'FOR RESEARCH USE ONLY. NOT FOR USE IN DIAGNOSTIC OR THERAPEUTIC PROCEDURES'.