

CHML Antibody

Purified Rabbit Polyclonal Antibody (Pab)

Catalog # AP51086

Product Information

Application	WB
Primary Accession	P26374
Reactivity	Human, Mouse, Rat
Host	Rabbit
Clonality	Polyclonal
Calculated MW	74071

Additional Information

Gene ID	1122
Other Names	Rab proteins geranylgeranyltransferase component A 2, Choroideremia-like protein, Rab escort protein 2, REP-2, CHML, REP2
Target/Specificity	KLH-conjugated synthetic peptide encompassing a sequence within the center region of human CHML. The exact sequence is proprietary.
Dilution	WB~~ 1:1000
Format	0.01M PBS, pH 7.2, 0.09% (W/V) Sodium azide, Glycerol 50%
Storage	Store at -20 °C.Stable for 12 months from date of receipt

Protein Information

Name	CHML
Synonyms	REP2
Function	Substrate-binding subunit (component A) of the Rab geranylgeranyltransferase (GGTase) complex. Binds unprenylated Rab proteins and presents the substrate peptide to the catalytic component B. The component A is thought to be regenerated by transferring its prenylated Rab back to the donor membrane. Less effective than CHM in supporting prenylation of Rab3 family.
Cellular Location	Cytoplasm, cytosol.

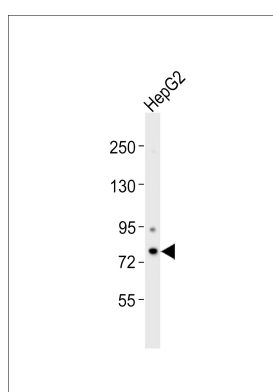
Background

Substrate-binding subunit (component A) of the Rab geranylgeranyltransferase (GGTase) complex. Binds unprenylated Rab proteins and presents the substrate peptide to the catalytic component B. The component A is thought to be regenerated by transferring its prenylated Rab back to the donor membrane. Less effective than CHM in supporting prenylation of Rab3 family.

References

Cremers F.P.M.,et al.Hum. Mol. Genet. 1:71-75(1992).
Kasper G.,et al.Gene 295:27-32(2002).
Ota T.,et al.Nat. Genet. 36:40-45(2004).
Gregory S.G.,et al.Nature 441:315-321(2006).
Mural R.J.,et al.Submitted (JUL-2005) to the EMBL/GenBank/DDBJ databases.

Images



Anti-CHML Antibody at 1:1000 dilution + HepG2 whole cell lysates. Lysates/proteins at 20 µg per lane. Secondary Goat Anti-Rabbit IgG, (H+L), Peroxidase conjugated at 1/10000 dilution. Predicted band size : 74 kDa. Blocking/Dilution buffer: 5% NFDM/TBST.

Please note: All products are 'FOR RESEARCH USE ONLY. NOT FOR USE IN DIAGNOSTIC OR THERAPEUTIC PROCEDURES'.