

Arylsulfatase E Antibody

Purified Rabbit Polyclonal Antibody (Pab)

Catalog # AP51000

Product Information

Application	WB
Primary Accession	P51690
Reactivity	Human
Host	Rabbit
Clonality	Polyclonal
Calculated MW	65669

Additional Information

Gene ID	415
Other Names	Arylsulfatase E, ASE, 316-, ARSE
Target/Specificity	KLH-conjugated synthetic peptide encompassing a sequence within the center region of human Arylsulfatase E. The exact sequence is proprietary.
Dilution	WB~~ 1:1000
Format	0.01M PBS, pH 7.2, 0.09% (W/V) Sodium azide, Glycerol 50%
Storage	Store at -20 °C.Stable for 12 months from date of receipt

Protein Information

Name	ARSL (HGNC:719)
Synonyms	ARSE
Function	Exhibits arylsulfatase activity towards the artificial substrate 4-methylumbelliferyl sulfate (PubMed: 7720070 , PubMed: 9497243). May be essential for the correct composition of cartilage and bone matrix during development (PubMed: 7720070). Has no activity toward steroid sulfates (PubMed: 7720070).
Cellular Location	Golgi apparatus, Golgi stack
Tissue Location	Expressed in the pancreas, liver and kidney.

Background

May be essential for the correct composition of cartilage and bone matrix during development. Has no activity toward steroid sulfates.

References

Franco B.,et al.Cell 81:15-25(1995).

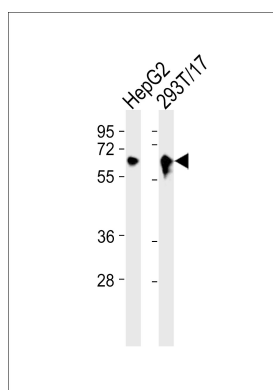
Suzuki Y.,et al.Submitted (APR-2005) to the EMBL/GenBank/DDBJ databases.

Daniele A.,et al.Am. J. Hum. Genet. 62:562-572(1998).

Chen R.,et al.J. Proteome Res. 8:651-661(2009).

Parenti G.,et al.Am. J. Med. Genet. 73:139-143(1997).

Images



All lanes : Anti-Arylsulfatase E Antibody at 1:1000 dilution
Lane 1: HepG2 whole cell lysates Lane 2: 293T/17 whole cell lysates Lysates/proteins at 20 µg per lane. Secondary Goat Anti-Rabbit IgG, (H+L), Peroxidase conjugated at 1/10000 dilution Predicted band size : 66 kDa
Blocking/Dilution buffer: 5% NFDm/TBST.

Please note: All products are 'FOR RESEARCH USE ONLY. NOT FOR USE IN DIAGNOSTIC OR THERAPEUTIC PROCEDURES'.