

ACAT1 Antibody

Purified Rabbit Polyclonal Antibody (Pab)
Catalog # AP50955

Product Information

Application	WB
Primary Accession	P24752
Reactivity	Human, Mouse, Rat
Host	Rabbit
Clonality	Polyclonal
Calculated MW	45 kDa

Additional Information

Other Names	Acetyl-CoA acetyltransferase, mitochondrial, Acetoacetyl-CoA thiolase, T2, ACAT1, ACAT, MAT
Target/Specificity	KLH-conjugated synthetic peptide encompassing a sequence within the center region of human ACAT1. The exact sequence is proprietary.
Dilution	WB~~ 1:1000
Format	0.01M PBS, pH 7.2, 0.09% (W/V) Sodium azide, Glycerol 50%
Storage	Store at -20 °C. Stable for 12 months from date of receipt

Protein Information

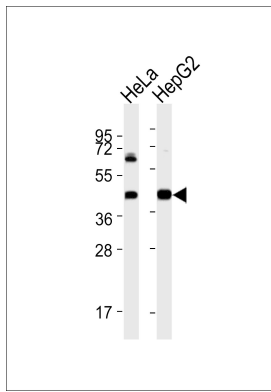
Background

Plays a major role in ketone body metabolism.

References

Fukao T., et al. *J. Clin. Invest.* 86:2086-2092(1990).
Kano M., et al. *Gene* 109:285-290(1991).
Ota T., et al. *Nat. Genet.* 36:40-45(2004).
Mural R.J., et al. Submitted (JUL-2005) to the EMBL/GenBank/DDBJ databases.
Aboulaich N., et al. *Biochem. J.* 383:237-248(2004).

Images



All lanes : Anti-ACAT1 Antibody at 1:1000 dilution Lane 1: HeLa whole cell lysates Lane 2: HepG2 whole cell lysates Lysates/proteins at 20 μ g per lane. Secondary Goat Anti-Rabbit IgG, (H+L), Peroxidase conjugated at 1/10000 dilution Predicted band size : 45 kDa Blocking/Dilution buffer: 5% NFDM/TBST.

Please note: All products are 'FOR RESEARCH USE ONLY. NOT FOR USE IN DIAGNOSTIC OR THERAPEUTIC PROCEDURES'.