

PVALB Antibody

Purified Rabbit Polyclonal Antibody (Pab)

Catalog # AP50936

Product Information

Application	WB
Primary Accession	P20472
Reactivity	Mouse, Rat
Host	Rabbit
Clonality	Polyclonal
Calculated MW	12059

Additional Information

Gene ID	5816
Other Names	Parvalbumin alpha, PVALB
Target/Specificity	KLH-conjugated synthetic peptide encompassing a sequence within the center region of human Parvalbumin alpha. The exact sequence is proprietary.
Dilution	WB~~ 1:500
Format	Rabbit IgG in phosphate buffered saline , pH 7.4, 150mM NaCl, 0.09% (W/V) sodium azide and 51% glycerol
Storage	Store at -20 °C.Stable for 12 months from date of receipt

Protein Information

Name	PVALB
Function	In muscle, parvalbumin is thought to be involved in relaxation after contraction (By similarity). It binds two calcium ions (PubMed: 15122922 , PubMed: 39584689).

Background

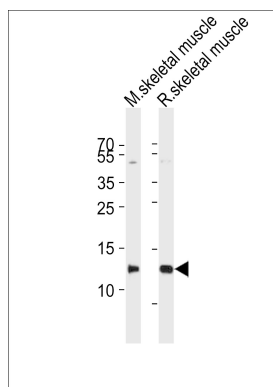
In muscle, parvalbumin is thought to be involved in relaxation after contraction. It binds two calcium ions.

References

Berchtold M.W.,et al.J. Mol. Biol. 210:417-427(1989).
Foehr U.G.,et al.Eur. J. Biochem. 215:719-727(1993).

Collins J.E.,et al.Genome Biol. 5:R84.1-R84.11(2004).
Ota T.,et al.Nat. Genet. 36:40-45(2004).
Dunham I.,et al.Nature 402:489-495(1999).

Images



Western blot analysis of lysates from mouse skeletal muscle, rat skeletal muscle tissue lysate (from left to right), using PVALB Antibody (AP50936). AP50936 was diluted at 1:1000 at each lane. A goat anti-rabbit IgG H&L (HRP) at 1:10000 dilution was used as the secondary antibody. Lysates at 20 µg per lane.

Please note: All products are 'FOR RESEARCH USE ONLY. NOT FOR USE IN DIAGNOSTIC OR THERAPEUTIC PROCEDURES'.