

# KLF2 Antibody

Purified Rabbit Polyclonal Antibody (Pab)

Catalog # AP50863

## Product Information

---

<b>Application</b>	WB, IHC-P, IHC-F, IF
<b>Primary Accession</b>	<a href="#">Q9Y5W3</a>
<b>Reactivity</b>	Human, Mouse, Rat, Rabbit, Sheep
<b>Host</b>	Rabbit
<b>Clonality</b>	Polyclonal
<b>Calculated MW</b>	37420
<b>Physical State</b>	Liquid
<b>Immunogen</b>	KLH conjugated synthetic peptide derived from human KLF2
<b>Epitope Specificity</b>	251-355/355
<b>Isotype</b>	IgG
<b>Purity</b>	affinity purified by Protein A
<b>Buffer</b>	0.01M TBS (pH7.4) with 1% BSA, 0.02% Proclin300 and 50% Glycerol.
<b>SUBCELLULAR LOCATION</b>	Nucleus.
<b>SIMILARITY</b>	Belongs to the krueppel C2H2-type zinc-finger protein family.Contains 3 C2H2-type zinc fingers.
<b>SUBUNIT</b>	Interacts with WWP1.
<b>Post-translational modifications</b>	Ubiquitinated. Polyubiquitination involves WWP1 and leads to proteasomal degradation of this protein.
<b>Important Note</b>	This product as supplied is intended for research use only, not for use in human, therapeutic or diagnostic applications.
<b>Background Descriptions</b>	Kruppel-like factors (KLFs) are a family of broadly expressed zinc finger transcription factors. KLF2 regulates T-cell trafficking by promoting expression of the lipid-binding receptor S1P1 (S1PR1; MIM 601974) and the selectin CD62L (SELL; MIM 153240) (summary by Weinreich et al., 2009 [PubMed 19592277]).[supplied by OMIM, Feb 2011]

## Additional Information

---

<b>Gene ID</b>	10365
<b>Other Names</b>	Krueppel-like factor 2, Lung krueppel-like factor, KLF2, LKLF
<b>Dilution</b>	WB=1:100-500,IHC-P=1:100-500,IHC-F=1:100-500,IF=1:100-500,Flow-Cyt=1ug/Test
<b>Format</b>	0.01M TBS(pH7.4) with 1% BSA, 0.09% (W/V) sodium azide and 50% Glyce
<b>Storage</b>	Store at -20 °C for one year. Avoid repeated freeze/thaw cycles. When reconstituted in sterile pH 7.4 0.01M PBS or diluent of antibody the antibody is stable for at least two weeks at 2-4 °C.

## Protein Information

---

Name	KLF2
Synonyms	LKLF
Function	Transcription factor that binds to the CACCC box in the promoter of target genes such as HBB/beta globin or NOV and activates their transcription (PubMed: <a href="#">21063504</a> ). Might be involved in transcriptional regulation by modulating the binding of the RARA nuclear receptor to RARE DNA elements (PubMed: <a href="#">28167758</a> ).
Cellular Location	Nucleus.

## Background

---

Binds to the CACCC box in the beta-globin gene promoter and activates transcription (By similarity).

## References

---

Kozyrev S.V.,et al.FEBS Lett. 448:149-152(1999).  
Wani M.A.,et al.Genomics 60:78-86(1999).  
Lee H.J.,et al.Submitted (NOV-1999) to the EMBL/GenBank/DDBJ databases.  
Conkright M.D.,et al.J. Biol. Chem. 276:29299-29306(2001).

## Images

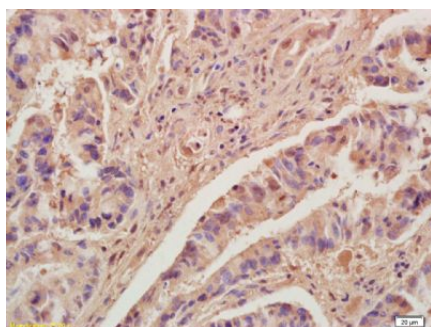
---

Image not found :  
201410/AP50863\_IHC-P\_1.jpg

Formalin-fixed and paraffin embedded human colon carcinoma labeled with Anti-KLF2 Polyclonal Antibody, Unconjugated (AP50863) at 1:200, followed by conjugation to the secondary antibody and DAB staining

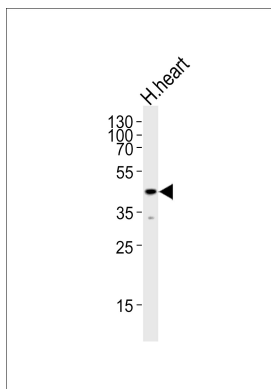
Image not found : 201410/AP50863\_IF\_1.jpg

Formalin-fixed and paraffin-embedded mouse embryo labeled with Anti-KLF2 Polyclonal Antibody, Unconjugated(AP50863) 1:200, overnight at 4°C, The secondary antibody was Goat Anti-Rabbit IgG, Cy3 conjugated(bs-0295G-Cy3)used at 1:200 dilution for 40 minutes at 37°C.



Tissue/cell: human colon carcinoma ; 4%  
Paraformaldehyde-fixed and paraffin-embedded; Antigen retrieval: citrate buffer ( 0.01M, pH 6.0 ), Boiling bathing for 15min; Block endogenous peroxidase by 3% Hydrogen peroxide for 30min; Blocking buffer at 37°C for 20 min; Incubation: Anti-KLF2 Polyclonal Antibody, Unconjugated1:200, overnight at 4°C, followed by conjugation to the secondary antibody and DAB staining

Mouse embryo lysates probed with Anti KLF2 Polyclonal Antibody, Unconjugated (AP50863) at 1:200 overnight at 4 °C. Followed by conjugation to secondary antibody at



1:3000 for 90 min at 37 °C.

Please note: All products are 'FOR RESEARCH USE ONLY. NOT FOR USE IN DIAGNOSTIC OR THERAPEUTIC PROCEDURES'.