

GUSBL1 Antibody

Purified Rabbit Polyclonal Antibody (Pab)

Catalog # AP50782

Product Information

Application	WB
Primary Accession	Q15486
Reactivity	Human
Host	Rabbit
Clonality	polyclonal
Calculated MW	15381

Additional Information

Other Names	Putative inactive beta-glucuronidase-like protein SMA3, GUSBP1, SMA3
Dilution	WB~~ 1:1000
Format	Rabbit IgG in phosphate buffered saline (without Mg ²⁺ and Ca ²⁺), pH 7.4, 150mM NaCl, 0.09% (W/V) sodium azide and 50% glycerol.
Storage Conditions	-20°C

Protein Information

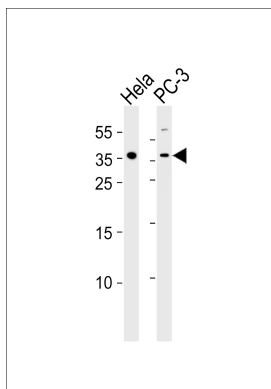
Name	GUSBP1
Synonyms	SMA3
Tissue Location	Ubiquitous.

References

Theodosiou A.M.,et al.Am. J. Hum. Genet. 55:1209-1217(1994).
Ota T.,et al.Nat. Genet. 36:40-45(2004).
Kalnine N.,et al.Submitted (MAY-2003) to the EMBL/GenBank/DDBJ databases.
Schmutz J.,et al.Nature 431:268-274(2004).

Images

Western blot analysis of lysates from Hela,PC-3 cell line
(from left to right),using GUSBL1 Antibody(AP50782).



AP50782 was diluted at 1:1000 at each lane. A goat anti-rabbit IgG H&L(HRP) at 1:5000 dilution was used as the secondary antibody. Lysates at 35ug per lane.

Please note: All products are 'FOR RESEARCH USE ONLY. NOT FOR USE IN DIAGNOSTIC OR THERAPEUTIC PROCEDURES'.