

# NMS Antibody

Purified Rabbit Polyclonal Antibody (Pab)

Catalog # AP50781

## Product Information

---

<b>Application</b>	WB
<b>Primary Accession</b>	<a href="#">Q5H8A3</a>
<b>Reactivity</b>	Human
<b>Host</b>	Rabbit
<b>Clonality</b>	polyclonal
<b>Calculated MW</b>	17731

## Additional Information

---

<b>Gene ID</b>	129521
<b>Other Names</b>	Neuromedin-S, NMS
<b>Dilution</b>	WB~~ 1:1000
<b>Format</b>	Rabbit IgG in phosphate buffered saline (without Mg <sup>2+</sup> and Ca <sup>2+</sup> ), pH 7.4, 150mM NaCl, 0.09% (W/V) sodium azide and 50% glycerol.
<b>Storage Conditions</b>	-20°C

## Protein Information

---

<b>Name</b>	NMS
<b>Function</b>	Implicated in the regulation of circadian rhythms through autocrine and/or paracrine actions.
<b>Cellular Location</b>	Secreted.

## Background

---

Implicated in the regulation of circadian rhythms through autocrine and/or paracrine actions (By similarity).

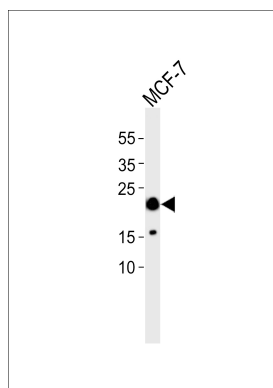
## References

---

Mori K., et al. EMBO J. 24:325-335(2005).

## Images

---



Western blot analysis of lysate from MCF-7 cell line, using NMS Antibody(AP50781). AP50781 was diluted at 1:1000. A goat anti-rabbit IgG H&L(HRP) at 1:5000 dilution was used as the secondary antibody. Lysate at 35ug.

Please note: All products are 'FOR RESEARCH USE ONLY. NOT FOR USE IN DIAGNOSTIC OR THERAPEUTIC PROCEDURES'.