

14-3-3 ϵ Antibody

Purified Rabbit Polyclonal Antibody (Pab)
Catalog # AP50745

Product Information

Application	WB
Primary Accession	P62258
Reactivity	Human, Mouse, Rat
Host	Rabbit
Clonality	polyclonal
Calculated MW	29174

Additional Information

Gene ID	7531
Other Names	14-3-3 protein epsilon, 14-3-3E, YWHAE
Dilution	WB~1:1000
Format	Rabbit IgG in phosphate buffered saline (without Mg ²⁺ and Ca ²⁺), pH 7.4, 150mM NaCl, 0.09% (W/V) sodium azide and 50% glycerol.
Storage Conditions	-20°C

Protein Information

Name	YWHAE
Function	<p>Adapter protein implicated in the regulation of a large spectrum of both general and specialized signaling pathways (PubMed:21189250). Binds to a large number of partners, usually by recognition of a phosphoserine or phosphothreonine motif (PubMed:35343654). Binding generally results in the modulation of the activity of the binding partner (By similarity). Positively regulates phosphorylated protein HSF1 nuclear export to the cytoplasm (PubMed:12917326). Plays a positive role in the antiviral signaling pathway upstream of TBK1 via interaction with RIGI (PubMed:37555661). Mechanistically, directs RIGI redistribution from the cytosol to mitochondrial associated membranes where it mediates MAVS-dependent innate immune signaling during viral infection (PubMed:22607805). Plays a role in proliferation inhibition and cell cycle arrest by exporting HNRNPC from the nucleus to the cytoplasm to be degraded by ubiquitination (PubMed:37599448).</p>
Cellular Location	Nucleus. Cytoplasm Melanosome Note=Identified by mass spectrometry in melanosome fractions from stage I to stage IV.

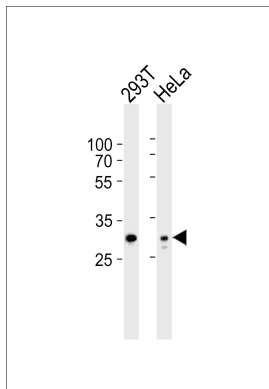
Background

Adapter protein implicated in the regulation of a large spectrum of both general and specialized signaling pathways. Binds to a large number of partners, usually by recognition of a phosphoserine or phosphothreonine motif. Binding generally results in the modulation of the activity of the binding partner.

References

- Conklin D.S.,et al.Proc. Natl. Acad. Sci. U.S.A. 92:7892-7896(1995).
Chong S.S.,et al.Genome Res. 6:735-741(1996).
Jin D.-Y.,et al.Nature 382:308-308(1996).
Han D.,et al.Biochem. Biophys. Res. Commun. 396:401-406(2010).
Luk S.C.W.,et al.Submitted (JUN-1995) to the EMBL/GenBank/DDBJ databases.

Images



Western blot analysis of lysates from 293T,HeLa cell line (from left to right),using 14-3-3 ϵ Antibody(AP50745). AP50745 was diluted at 1:1000 at each lane. A goat anti-rabbit IgG H&L(HRP) at 1:5000 dilution was used as the secondary antibody.Lysates at 35ug per lane.

Please note: All products are 'FOR RESEARCH USE ONLY. NOT FOR USE IN DIAGNOSTIC OR THERAPEUTIC PROCEDURES'.