

CLDN11 Antibody

Purified Rabbit Polyclonal Antibody (Pab)

Catalog # AP50727

Product Information

Application	WB
Primary Accession	O75508
Reactivity	Human, Mouse, Rat
Host	Rabbit
Clonality	Polyclonal
Calculated MW	21993

Additional Information

Gene ID	5010
Other Names	Claudin-11, Oligodendrocyte-specific protein, CLDN11, OSP, OTM
Target/Specificity	KLH-conjugated synthetic peptide encompassing a sequence within the C-term region of human Claudin 11. The exact sequence is proprietary.
Dilution	WB~~ 1:1000
Storage	Store at -20 °C.Stable for 12 months from date of receipt

Protein Information

Name	CLDN11
Synonyms	OSP, OTM
Function	Plays a major role in tight junction-specific obliteration of the intercellular space, through calcium-independent cell-adhesion activity.
Cellular Location	Cell junction, tight junction. Cell membrane; Multi-pass membrane protein

Background

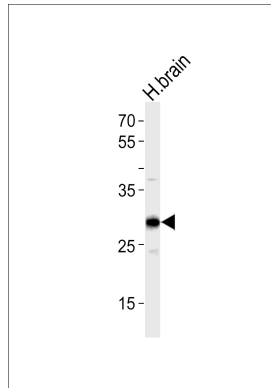
Plays a major role in tight junction-specific obliteration of the intercellular space, through calcium-independent cell-adhesion activity (By similarity).

References

Bronstein J.M.,et al.J. Neurosci. Res. 59:706-711(2000).

Keen T.J.,et al.Submitted (SEP-1999) to the EMBL/GenBank/DDBJ databases.
Kalnina N.,et al.Submitted (OCT-2004) to the EMBL/GenBank/DDBJ databases.
Ota T.,et al.Nat. Genet. 36:40-45(2004).
Mural R.J.,et al.Submitted (SEP-2005) to the EMBL/GenBank/DDBJ databases.

Images



Western blot analysis of lysate from human brain tissue lysate,using CLDN11 Antibody was diluted at 1:1000. A goat anti-rabbit IgG H&L(HRP) at 1:5000 dilution was used as the secondary antibody.Lysate at 35ug.

Please note: All products are 'FOR RESEARCH USE ONLY. NOT FOR USE IN DIAGNOSTIC OR THERAPEUTIC PROCEDURES'.