

BAG3 Antibody

Purified Rabbit Polyclonal Antibody (Pab)
Catalog # AP50650

Product Information

Application	WB, IHC
Primary Accession	O95817
Reactivity	Human, Mouse, Rat
Host	Rabbit
Clonality	polyclonal
Calculated MW	62 KDa

Additional Information

Other Names	BAG family molecular chaperone regulator 3, BAG-3, Bcl-2-associated athanogene 3, Bcl-2-binding protein Bis, Docking protein CAIR-1, BAG3, BIS
Dilution	WB~~1:1000 IHC~~1:50-1:100
Format	Rabbit IgG in phosphate buffered saline (without Mg ²⁺ and Ca ²⁺), pH 7.4, 150mM NaCl, 0.09% (W/V) sodium azide and 50% glycerol.
Storage Conditions	-20°C

Protein Information

Background

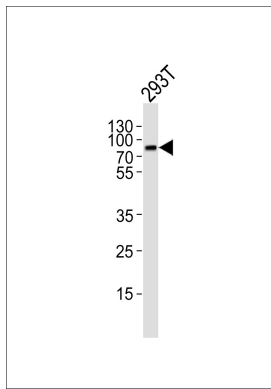
Inhibits the chaperone activity of HSP70/HSC70 by promoting substrate release. Has anti-apoptotic activity.

References

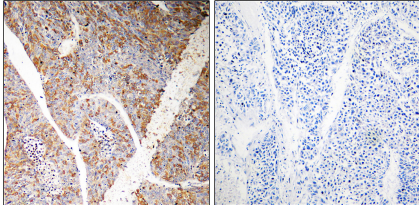
Takayama S., et al. *J. Biol. Chem.* 274:781-786(1999).
Lee J.H., et al. *Oncogene* 18:6183-6190(1999).
Doong H., et al. *Oncogene* 19:4385-4395(2000).
Ota T., et al. *Nat. Genet.* 36:40-45(2004).
Bechtel S., et al. *BMC Genomics* 8:399-399(2007).

Images

Western blot analysis of lysate from 293T cell line, using BAG3 Antibody(AP50650). AP50650 was diluted at 1:1000.



A goat anti-rabbit IgG H&L(HRP) at 1:5000 dilution was used as the secondary antibody. Lysate at 35ug.



Immunohistochemistry analysis of paraffin-embedded human liver carcinoma tissue, using BAG3 antibody.

Please note: All products are 'FOR RESEARCH USE ONLY. NOT FOR USE IN DIAGNOSTIC OR THERAPEUTIC PROCEDURES'.