

CCT7 Antibody

Purified Rabbit Polyclonal Antibody (Pab)

Catalog # AP50628

Product Information

Application	WB
Primary Accession	Q99832
Reactivity	Human, Mouse, Rat
Host	Rabbit
Clonality	polyclonal
Calculated MW	59367

Additional Information

Gene ID	10574
Other Names	T-complex protein 1 subunit eta, TCP-1-eta, CCT-eta, HIV-1 Nef-interacting protein, CCT7, CCTH, NIP7-1
Dilution	WB~~ 1:1000
Format	Rabbit IgG in phosphate buffered saline (without Mg2+ and Ca2+), pH 7.4, 150mM NaCl, 0.09% (W/V) sodium azide and 50% glycerol.
Storage Conditions	-20°C

Protein Information

Name	CCT7
Synonyms	CCTH, NIP7-1
Function	Component of the chaperonin-containing T-complex (TRiC), a molecular chaperone complex that assists the folding of actin, tubulin and other proteins upon ATP hydrolysis (PubMed: 25467444 , PubMed: 36493755 , PubMed: 35449234 , PubMed: 37193829). The TRiC complex mediates the folding of WRAP53/TCAB1, thereby regulating telomere maintenance (PubMed: 25467444).
Cellular Location	Cytoplasm {ECO:0000250 UniProtKB:P80313}.

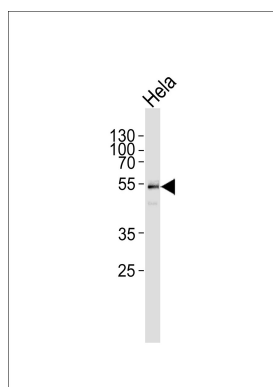
Background

Molecular chaperone; assists the folding of proteins upon ATP hydrolysis. Known to play a role, in vitro, in the folding of actin and tubulin (By similarity).

References

Won K.-A.,et al.Mol. Cell. Biol. 18:7584-7589(1998).
Halleck A.,et al.Submitted (JUN-2004) to the EMBL/GenBank/DDBJ databases.
Ota T.,et al.Nat. Genet. 36:40-45(2004).
Hillier L.W.,et al.Nature 434:724-731(2005).
Mural R.J.,et al.Submitted (SEP-2005) to the EMBL/GenBank/DDBJ databases.

Images



Western blot analysis of lysate from HeLa cell line,using CCT7 Antibody(AP50628). AP50628 was diluted at 1:1000. A goat anti-rabbit IgG H&L(HRP) at 1:5000 dilution was used as the secondary antibody.Lysate at 35ug.

Please note: All products are 'FOR RESEARCH USE ONLY. NOT FOR USE IN DIAGNOSTIC OR THERAPEUTIC PROCEDURES'.