

Synuclein γ Antibody

Purified Rabbit Polyclonal Antibody (Pab)

Catalog # AP50617

Product Information

Application	WB, IHC
Primary Accession	O76070
Reactivity	Human
Host	Rabbit
Clonality	polyclonal
Calculated MW	13331

Additional Information

Gene ID	6623
Other Names	Gamma-synuclein, Breast cancer-specific gene 1 protein, Persyn, Synoretin, SR, SNCG, BCSG1, PERSYN, PRSN
Dilution	WB~~ 1:1000 IHC~~1:50-1:100
Format	Rabbit IgG in phosphate buffered saline (without Mg ²⁺ and Ca ²⁺), pH 7.4, 150mM NaCl, 0.09% (W/V) sodium azide and 50% glycerol.
Storage Conditions	-20°C

Protein Information

Name	SNCG
Synonyms	BCSG1, PERSYN, PRSN
Function	Plays a role in neurofilament network integrity. May be involved in modulating axonal architecture during development and in the adult. In vitro, increases the susceptibility of neurofilament-H to calcium-dependent proteases (By similarity). May also function in modulating the keratin network in skin. Activates the MAPK and Elk-1 signal transduction pathway (By similarity).
Cellular Location	Cytoplasm, perinuclear region. Cytoplasm, cytoskeleton, microtubule organizing center, centrosome. Cytoplasm, cytoskeleton, spindle. Note=Associated with centrosomes in several interphase cells. In mitotic cells, localized to the poles of the spindle
Tissue Location	Highly expressed in brain, particularly in the substantia nigra. Also expressed in the corpus callosum, heart, skeletal muscle, ovary, testis, colon and spleen. Weak expression in pancreas, kidney and lung

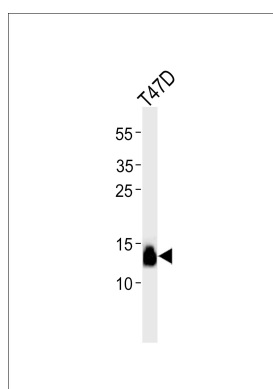
Background

Plays a role in neurofilament network integrity. May be involved in modulating axonal architecture during development and in the adult. In vitro, increases the susceptibility of neurofilament-H to calcium-dependent proteases (By similarity). May also function in modulating the keratin network in skin. Activates the MAPK and Elk-1 signal transduction pathway (By similarity).

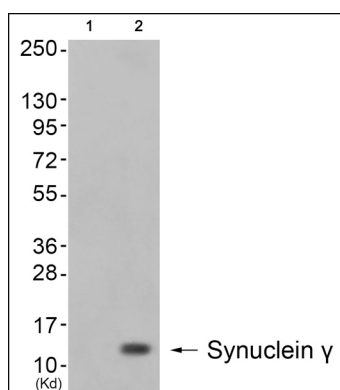
References

Ji H.,et al.Cancer Res. 57:759-764(1997).
Ninkina N.N.,et al.Hum. Mol. Genet. 7:1417-1424(1998).
Lavedan C.,et al.Hum. Genet. 103:106-112(1998).
Han C.,et al.Submitted (AUG-2001) to the EMBL/GenBank/DDBJ databases.
Pronin A.N.,et al.J. Biol. Chem. 275:26515-26522(2000).

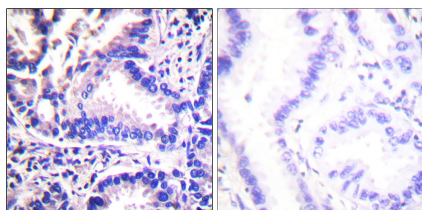
Images



Western blot analysis of lysate from T47D cell line,using Synuclein γ Antibody(AP50617). AP50617 was diluted at 1:1000. A goat anti-rabbit IgG H&L(HRP) at 1:5000 dilution was used as the secondary antibody.Lysate at 35ug.



Western blot analysis of extracts from cos-7 cells (Lane 2), using Synuclein γ Antibody. The lane on the left is treated with synthesized peptide.



Immunohistochemical analysis of paraffin-embedded human lung carcinoma tissue using Synuclein γ Antibody

Please note: All products are 'FOR RESEARCH USE ONLY. NOT FOR USE IN DIAGNOSTIC OR THERAPEUTIC PROCEDURES'.