

# GLRX5 Antibody (C-term)

Affinity Purified Rabbit Polyclonal Antibody (Pab)

Catalog # AP5035b

## Product Information

---

Application	WB, FC, E
Primary Accession	<a href="#">Q86SX6</a>
Reactivity	Human
Host	Rabbit
Clonality	Polyclonal
Isotype	Rabbit IgG
Clone Names	RB25680
Calculated MW	16628
Antigen Region	129-157

## Additional Information

---

Gene ID	51218
Other Names	Glutaredoxin-related protein 5, mitochondrial, Monothiol glutaredoxin-5, GLRX5, C14orf87
Target/Specificity	This GLRX5 antibody is generated from rabbits immunized with a KLH conjugated synthetic peptide between 129-157 amino acids from the C-terminal region of human GLRX5.
Dilution	WB~~1:1000 FC~~1:10~50 E~~Use at an assay dependent concentration.
Format	Purified polyclonal antibody supplied in PBS with 0.09% (W/V) sodium azide. This antibody is purified through a protein A column, followed by peptide affinity purification.
Storage	Maintain refrigerated at 2-8°C for up to 2 weeks. For long term storage store at -20°C in small aliquots to prevent freeze-thaw cycles.
Precautions	GLRX5 Antibody (C-term) is for research use only and not for use in diagnostic or therapeutic procedures.

## Protein Information

---

Name	GLRX5
Synonyms	C14orf87
Function	Monothiol glutaredoxin involved in mitochondrial iron-sulfur (Fe/S) cluster transfer (PubMed: <a href="#">20364084</a> , PubMed: <a href="#">23615440</a> ). Receives 2Fe/2S clusters

from scaffold protein ISCU and mediates their transfer to apoproteins, to the 4Fe/FS cluster biosynthesis machinery, or export from mitochondrion (PubMed:[20364084](#), PubMed:[23615440](#), PubMed:[24334290](#)). Required for normal regulation of hemoglobin synthesis by the iron- sulfur protein ACO1 (PubMed:[20364084](#)).

## Cellular Location

Mitochondrion matrix

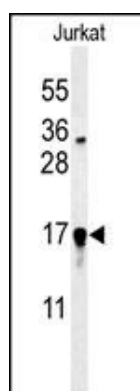
## Background

GLRX5 is monothiol glutaredoxin involved in the biogenesis of iron-sulfur clusters. GLRX5 required for normal iron homeostasis. GLRX5 is required for normal regulation of hemoglobin synthesis by the iron-sulfur protein ACO1.

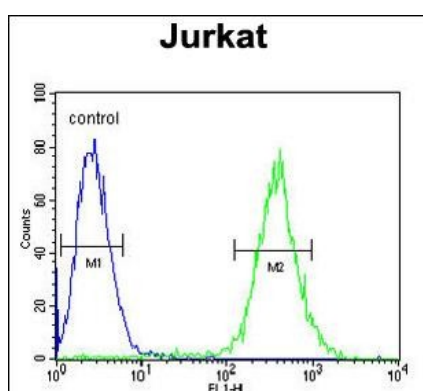
## References

Bergmann, A.K., et al. *Pediatr Blood Cancer* 54(2):273-278(2010)  
Camaschella, C., et al. *Blood* 110(4):1353-1358(2007)  
Wingert, R.A., et al. *Nature* 436(7053):1035-1039(2005)

## Images



Western blot analysis of GLRX5 Antibody (C-term) (Cat. #AP5035b) in Jurkat cell line lysates (35ug/lane). GLRX5 (arrow) was detected using the purified Pab.



GLRX5 Antibody (C-term) (Cat. #AP5035b) flow cytometric analysis of Jurkat cells (right histogram) compared to a negative control cell (left histogram). FITC-conjugated goat-anti-rabbit secondary antibodies were used for the analysis.

Please note: All products are 'FOR RESEARCH USE ONLY. NOT FOR USE IN DIAGNOSTIC OR THERAPEUTIC PROCEDURES'.