

WASF2 Antibody

Purified Rabbit Polyclonal Antibody (Pab)

Catalog # AP50212

Product Information

Application	WB, IHC
Primary Accession	Q9Y6W5
Reactivity	Human, Mouse, Rat
Host	Rabbit
Clonality	polyclonal
Calculated MW	54284

Additional Information

Gene ID	10163
Other Names	Wiskott-Aldrich syndrome protein family member 2, WASP family protein member 2, Protein WAVE-2, Verprolin homology domain-containing protein 2, WASF2, WAVE2
Dilution	WB~~ 1:1000 IHC~~1:50-1:100
Format	Rabbit IgG in phosphate buffered saline (without Mg ²⁺ and Ca ²⁺), pH 7.4, 150mM NaCl, 0.09% (W/V) sodium azide and 50% glycerol.
Storage Conditions	-20°C

Protein Information

Name	WASF2 (HGNC:12733)
Function	Downstream effector molecule involved in the transmission of signals from tyrosine kinase receptors and small GTPases to the actin cytoskeleton. Promotes formation of actin filaments. Part of the WAVE complex that regulates lamellipodia formation. The WAVE complex regulates actin filament reorganization via its interaction with the Arp2/3 complex.
Cellular Location	Cytoplasm, cytoskeleton. Cell projection, lamellipodium. Basolateral cell membrane. Note=At the interface between the lamellipodial actin meshwork and the membrane.
Tissue Location	Expressed in all tissues with strongest expression in placenta, lung, and peripheral blood leukocytes, but not in skeletal muscle.

Background

Downstream effector molecule involved in the transmission of signals from tyrosine kinase receptors and small GTPases to the actin cytoskeleton. Promotes formation of actin filaments. Part of the WAVE complex that regulates lamellipodia formation. The WAVE complex regulates actin filament reorganization via its interaction with the Arp2/3 complex.

References

Suetsugu S., et al. *Biochem. Biophys. Res. Commun.* 260:296-302(1999).

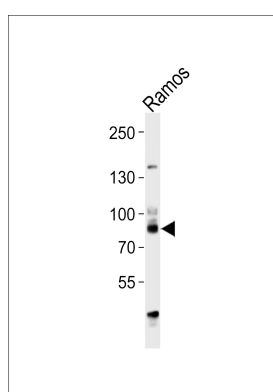
Ota T., et al. *Nat. Genet.* 36:40-45(2004).

Gregory S.G., et al. *Nature* 441:315-321(2006).

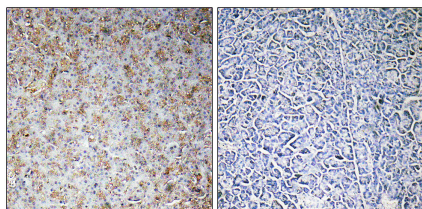
Miki H., et al. *Nature* 408:732-735(2000).

Gautreau A., et al. *Proc. Natl. Acad. Sci. U.S.A.* 101:4379-4383(2004).

Images



Western blot analysis of lysate from Ramos cell line, using WASF2 Antibody(C19560). C19560 was diluted at 1:1000. A goat anti-rabbit IgG H&L(HRP) at 1:5000 dilution was used as the secondary antibody. Lysate at 35ug.



Immunohistochemistry analysis of paraffin-embedded human pancreas tissue, using WASF2 antibody.

Please note: All products are 'FOR RESEARCH USE ONLY. NOT FOR USE IN DIAGNOSTIC OR THERAPEUTIC PROCEDURES'.