

HGS Antibody

Purified Rabbit Polyclonal Antibody (Pab)
Catalog # AP50208

Product Information

Application	WB, IF, IHC
Primary Accession	O14964
Reactivity	Human, Mouse, Rat
Host	Rabbit
Clonality	polyclonal
Calculated MW	86 kDa

Additional Information

Other Names	Hepatocyte growth factor-regulated tyrosine kinase substrate, Hrs, Protein pp110, HGS, HRS
Dilution	WB~~ 1:1000 IF~~1:100 IHC~~1:50-1:100
Format	Rabbit IgG in phosphate buffered saline (without Mg ²⁺ and Ca ²⁺), pH 7.4, 150mM NaCl, 0.09% (W/V) sodium azide and 50% glycerol.
Storage Conditions	-20°C

Protein Information

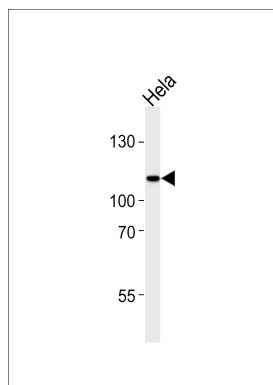
Background

Involved in intracellular signal transduction mediated by cytokines and growth factors. When associated with STAM, it suppresses DNA signaling upon stimulation by IL-2 and GM-CSF. Could be a direct effector of PI3-kinase in vesicular pathway via early endosomes and may regulate trafficking to early and late endosomes by recruiting clathrin. May concentrate ubiquitinated receptors within clathrin-coated regions. Involved in down- regulation of receptor tyrosine kinase via multivesicular body (MVBs) when complexed with STAM (ESCRT-0 complex). The ESCRT-0 complex binds ubiquitin and acts as sorting machinery that recognizes ubiquitinated receptors and transfers them to further sequential lysosomal sorting/trafficking processes. May contribute to the efficient recruitment of SMADs to the activin receptor complex. Involved in receptor recycling via its association with the CART complex, a multiprotein complex required for efficient transferrin receptor recycling but not for EGFR degradation.

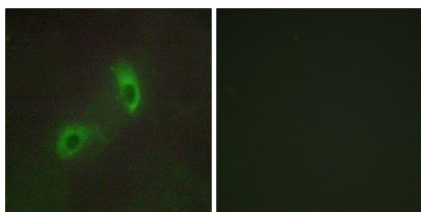
References

Asao H.,et al.J. Biol. Chem. 272:32785-32791(1997).
Lu L.,et al.Gene 213:125-132(1998).
Scoles D.R.,et al.Hum. Mol. Genet. 9:1567-1574(2000).

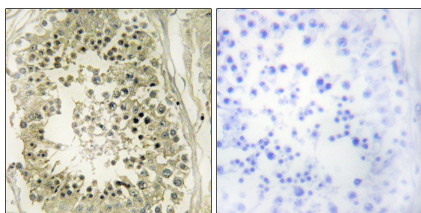
Images



Western blot analysis of lysate from HeLa cell line,using HGS Antibody(C10062). C10062 was diluted at 1:1000. A goat anti-rabbit IgG H&L(HRP) at 1:5000 dilution was used as the secondary antibody.Lysate at 35ug.



Immunofluorescence analysis of HUVEC cells, using HGS antibody.



Immunohistochemistry analysis of paraffin-embedded human testis tissue using HGS antibody.

Please note: All products are 'FOR RESEARCH USE ONLY. NOT FOR USE IN DIAGNOSTIC OR THERAPEUTIC PROCEDURES'.