

FOLR1 Antibody

Purified Rabbit Polyclonal Antibody (Pab)

Catalog # AP50196

Product Information

Application	WB
Primary Accession	P15328
Reactivity	Human, Mouse, Rat
Host	Rabbit
Clonality	polyclonal
Calculated MW	29819

Additional Information

Gene ID	2348
Other Names	Folate receptor alpha, FR-alpha, Adult folate-binding protein, FBP, Folate receptor 1, Folate receptor, adult, KB cells FBP, Ovarian tumor-associated antigen MOV18, FOLR1, FOLR
Dilution	WB~~ 1:1000
Format	Rabbit IgG in phosphate buffered saline (without Mg2+ and Ca2+), pH 7.4, 150mM NaCl, 0.09% (W/V) sodium azide and 50% glycerol.
Storage Conditions	-20°C

Protein Information

Name	FOLR1
Synonyms	FOLR
Function	Binds to folate and reduced folic acid derivatives and mediates delivery of 5-methyltetrahydrofolate and folate analogs into the interior of cells (PubMed: 19074442 , PubMed: 23851396 , PubMed: 23934049 , PubMed: 2527252 , PubMed: 8033114 , PubMed: 8567728). Has high affinity for folate and folic acid analogs at neutral pH (PubMed: 23851396 , PubMed: 23934049 , PubMed: 2527252 , PubMed: 8033114 , PubMed: 8567728). Exposure to slightly acidic pH after receptor endocytosis triggers a conformation change that strongly reduces its affinity for folates and mediates their release (PubMed: 8567728). Required for normal embryonic development and normal cell proliferation (By similarity).
Cellular Location	Cell membrane; Lipid-anchor, GPI-anchor Apical cell membrane; Lipid-anchor, GPI- anchor Basolateral cell membrane; Lipid-anchor, GPI-like-anchor. Secreted Cytoplasmic vesicle. Cytoplasmic vesicle, clathrin-coated vesicle.

Endosome. Note=Endocytosed into cytoplasmic vesicles and then recycled to the cell membrane

Tissue Location

Primarily expressed in tissues of epithelial origin. Expression is increased in malignant tissues. Expressed in kidney, lung and cerebellum. Detected in placenta and thymus epithelium.

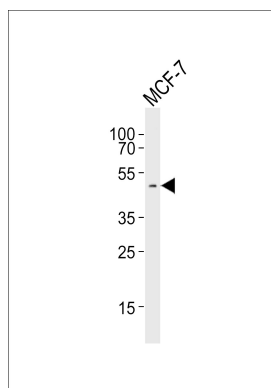
Background

Binds to folate and reduced folic acid derivatives and mediates delivery of 5-methyltetrahydrofolate and folate analogs into the interior of cells. Has high affinity for folate and folic acid analogs at neutral pH. Exposure to slightly acidic pH after receptor endocytosis triggers a conformation change that strongly reduces its affinity for folates and mediates their release. Required for normal embryonic development and normal cell proliferation.

References

Elwood P.C.,et al.J. Biol. Chem. 264:14893-14901(1989).
Lacey S.W.,et al.J. Clin. Invest. 84:715-720(1989).
Campbell I.G.,et al.Cancer Res. 51:5329-5338(1991).
Coney L.R.,et al.Cancer Res. 51:6125-6132(1991).
Sadasivan E.,et al.Biochim. Biophys. Acta 1131:91-94(1992).

Images



Western blot analysis of lysate from MCF-7 cell line,using FOLR1 Antibody(C15761). C15761 was diluted at 1:1000. A goat anti-rabbit IgG H&L(HRP) at 1:5000 dilution was used as the secondary antibody.Lysate at 35ug.

Please note: All products are 'FOR RESEARCH USE ONLY. NOT FOR USE IN DIAGNOSTIC OR THERAPEUTIC PROCEDURES'.