

# BRP44L Antibody

Purified Rabbit Polyclonal Antibody (Pab)

Catalog # AP50065

## Product Information

---

|                   |                        |
|-------------------|------------------------|
| Application       | WB, IF, IHC            |
| Primary Accession | <a href="#">Q9Y5U8</a> |
| Reactivity        | Human, Mouse, Rat      |
| Host              | Rabbit                 |
| Clonality         | polyclonal             |
| Calculated MW     | 12347                  |

## Additional Information

---

|                    |   |
|--------------------|---|
| Gene ID            | 51660   |
| Other Names        | Mitochondrial pyruvate carrier 1, Brain protein 44-like protein, MPC1, BRP44L   |
| Dilution           | WB~~ 1:1000 IF~~1:100 IHC~~1:50-1:100   |
| Format             | Rabbit IgG in phosphate buffered saline (without Mg2+ and Ca2+), pH 7.4, 150mM NaCl, 0.09% (W/V) sodium azide and 50% glycerol. |
| Storage Conditions | -20°C   |

## Protein Information

---

|                   |  |
|-------------------|--|
| Name              | MPC1   |
| Synonyms          | BRP44L   |
| Function          | Mediates the uptake of pyruvate into mitochondria to maintain the balance between glycolysis and oxidative phosphorylation (PubMed: <a href="#">22628558</a> , PubMed: <a href="#">26253029</a> , PubMed: <a href="#">27317664</a> , PubMed: <a href="#">40044865</a> , PubMed: <a href="#">40101766</a> ). Plays an essential role in cellular metabolism (PubMed: <a href="#">40044865</a> , PubMed: <a href="#">40101766</a> ). |
| Cellular Location | Mitochondrion inner membrane; Multi-pass membrane protein  |

## Background

---

Mediates the uptake of pyruvate into mitochondria.

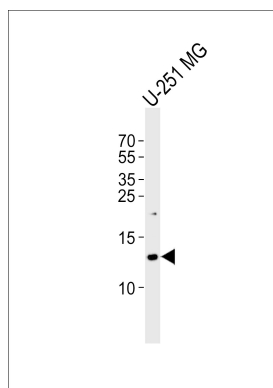
## References

---

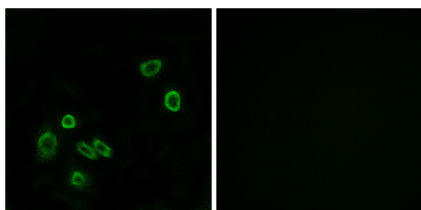
Zhang Q.-H.,et al.Genome Res. 10:1546-1560(2000).  
Lai C.-H.,et al.Genome Res. 10:703-713(2000).  
Ota T.,et al.Nat. Genet. 36:40-45(2004).  
Mungall A.J.,et al.Nature 425:805-811(2003).  
Yu W.-Q.,et al.Submitted (JUN-2000) to the EMBL/GenBank/DDBJ databases.

## Images

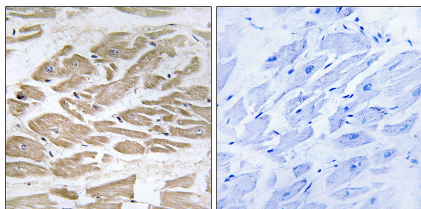
---



Western blot analysis of lysate from U-251 MG cell line, using BRP44L Antibody(C14781). C14781 was diluted at 1:1000. A goat anti-rabbit IgG H&L(HRP) at 1:5000 dilution was used as the secondary antibody. Lysate at 35ug.



Immunofluorescence analysis of A549 cells, using BRP44L antibody.



Immunohistochemistry analysis of paraffin-embedded human heart tissue using BRP44L antibody.

Please note: All products are 'FOR RESEARCH USE ONLY. NOT FOR USE IN DIAGNOSTIC OR THERAPEUTIC PROCEDURES'.