

# MYL7 Antibody

Purified Rabbit Polyclonal Antibody (Pab)

Catalog # AP50060

## Product Information

---

<b>Application</b>	WB
<b>Primary Accession</b>	<a href="#">Q01449</a>
<b>Reactivity</b>	Human, Mouse, Rat
<b>Host</b>	Rabbit
<b>Clonality</b>	polyclonal
<b>Calculated MW</b>	19448

## Additional Information

---

<b>Gene ID</b>	58498
<b>Other Names</b>	Myosin regulatory light chain 2, atrial isoform, MLC-2a, MLC2a, Myosin light chain 2a, Myosin regulatory light chain 7, MYL7, MYL2A, MYLC2A
<b>Dilution</b>	WB~~ 1:500-1:1000
<b>Format</b>	Rabbit IgG in phosphate buffered saline (without Mg2+ and Ca2+), pH 7.4, 150mM NaCl, 0.09% (W/V) sodium azide and 50% glycerol.
<b>Storage Conditions</b>	-20°C

## Protein Information

---

<b>Name</b>	MYL7
<b>Synonyms</b>	MYL2A, MYLC2A
<b>Tissue Location</b>	Predominantly expressed in adult atrial muscle.

## References

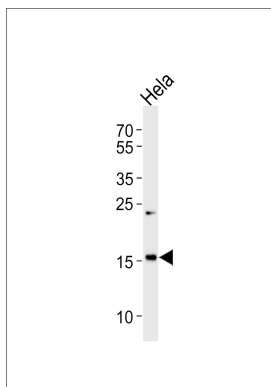
---

Hailstones D.L.,et al.J. Biol. Chem. 267:23295-23300(1992).  
Ota T.,et al.Nat. Genet. 36:40-45(2004).

## Images

---

Western blot analysis of lysates from Hela cell line ,using



MYL7 Antibody(C20920). C20920 was diluted at 1:1000. A goat anti-rabbit IgG H&L(HRP) at 1:5000 dilution was used as the secondary antibody. Lysates at 35ug.

Please note: All products are 'FOR RESEARCH USE ONLY. NOT FOR USE IN DIAGNOSTIC OR THERAPEUTIC PROCEDURES'.