

# C1S Antibody

Purified Rabbit Polyclonal Antibody (Pab)

Catalog # AP50057

## Product Information

Application	WB, IHC
Primary Accession	<a href="#">P09871</a>
Reactivity	Human
Host	Rabbit
Clonality	polyclonal
Calculated MW	76684

## Additional Information

Gene ID	716
Other Names	Complement C1s subcomponent, C1 esterase, Complement component 1 subcomponent s, Complement C1s subcomponent heavy chain, Complement C1s subcomponent light chain, C1S
Dilution	WB~~ 1:500-1:1000 IHC~~1:50-1:100
Format	Rabbit IgG in phosphate buffered saline (without Mg2+ and Ca2+), pH 7.4, 150mM NaCl, 0.09% (W/V) sodium azide and 50% glycerol.
Storage Conditions	-20°C

## Protein Information

Name	C1S {ECO:0000303   PubMed:3500856, ECO:0000312   HGNC:HGNC:1247}
Function	<p>Component of the complement C1 complex, a multiprotein complex that initiates the classical pathway of the complement system, a cascade of proteins that leads to phagocytosis and breakdown of pathogens and signaling that strengthens the adaptive immune system (PubMed:<a href="#">11445589</a>, PubMed:<a href="#">16169853</a>, PubMed:<a href="#">417728</a>, PubMed:<a href="#">467643</a>, PubMed:<a href="#">6271784</a>, PubMed:<a href="#">6282646</a>, PubMed:<a href="#">6319179</a>, PubMed:<a href="#">70787</a>, PubMed:<a href="#">9422791</a>). C1S is activated following association of the C1 complex with immunoglobulins (IgG or IgM) complexed with antigens to form antigen-antibody complexes on the surface of pathogens (PubMed:<a href="#">34155115</a>). C1S is cleaved and activated by C1R to generate C1s subcomponent heavy and light chains (PubMed:<a href="#">11445589</a>, PubMed:<a href="#">6271784</a>). C1s subcomponent light chain then cleaves and activates C2 and C4, the next components of the classical complement pathway (PubMed:<a href="#">16169853</a>, PubMed:<a href="#">467643</a>, PubMed:<a href="#">6282646</a>, PubMed:<a href="#">6319179</a>, PubMed:<a href="#">6906228</a>, PubMed:<a href="#">70787</a>, PubMed:<a href="#">9422791</a>).</p>

## Cellular Location

Secreted. Cell surface. Note=Recruited to the surface of pathogens by the C1Q subcomplex.

## Background

---

C1s B chain is a serine protease that combines with C1q and C1r to form C1, the first component of the classical pathway of the complement system. C1r activates C1s so that it can, in turn, activate C2 and C4.

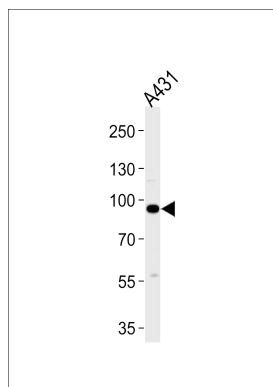
## References

---

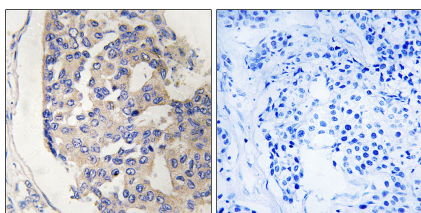
McKinnon C.M.,et al.Eur. J. Biochem. 169:547-553(1987).  
Tosi M.,et al.Biochemistry 26:8516-8524(1987).  
Kusumoto H.,et al.Proc. Natl. Acad. Sci. U.S.A. 85:7307-7311(1988).  
Mural R.J.,et al.Submitted (SEP-2005) to the EMBL/GenBank/DDBJ databases.  
Endo Y.,et al.J. Immunol. 161:4924-4930(1998).

## Images

---



Western blot analysis of lysates from A431 cell line ,using C1S Antibody(C15211). C15211 was diluted at 1:1000. A goat anti-rabbit IgG H&L(HRP) at 1:5000 dilution was used as the secondary antibody.Lysates at 35ug.



Immunohistochemistry analysis of paraffin-embedded human breast carcinoma tissue, using C1S antibody.

Please note: All products are 'FOR RESEARCH USE ONLY. NOT FOR USE IN DIAGNOSTIC OR THERAPEUTIC PROCEDURES'.