

TPPP3 Antibody (C-term)

Affinity Purified Rabbit Polyclonal Antibody (Pab)
Catalog # AP5004b

Product Information

Application	IHC-P, FC, WB, E
Primary Accession	Q9BW30
Other Accession	Q5PPN5 , Q9CRB6 , Q3ZCC8
Reactivity	Human, Rat, Mouse
Predicted	Bovine, Rat
Host	Rabbit
Clonality	Polyclonal
Isotype	Rabbit IgG
Clone Names	RB22270
Calculated MW	18985
Antigen Region	117-146

Additional Information

Gene ID	51673
Other Names	Tubulin polymerization-promoting protein family member 3, TPPP/p20, TPPP3
Target/Specificity	This TPPP3 antibody is generated from rabbits immunized with a KLH conjugated synthetic peptide between 117-146 amino acids of human TPPP3.
Dilution	IHC-P~~1:100~500 FC~~1:10~50 WB~~1:1000 E~~Use at an assay dependent concentration.
Format	Purified polyclonal antibody supplied in PBS with 0.09% (W/V) sodium azide. This antibody is purified through a protein A column, followed by peptide affinity purification.
Storage	Maintain refrigerated at 2-8°C for up to 2 weeks. For long term storage store at -20°C in small aliquots to prevent freeze-thaw cycles.
Precautions	TPPP3 Antibody (C-term) is for research use only and not for use in diagnostic or therapeutic procedures.

Protein Information

Name	TPPP3 {ECO:0000303 PubMed:19633818, ECO:0000312 HGNC:HGNC:24162}
Function	Regulator of microtubule dynamic that has microtubule bundling activity (PubMed: 17105200 , PubMed: 19633818). Required for embryo implantation;

possibly by regulating beta-catenin (By similarity). Also required for decidualization via regulation of beta- catenin (PubMed:[30667362](#)).

Cellular Location

Cytoplasm. Cytoplasm, cytoskeleton

Tissue Location

Expressed in endometrium during the mid-secretory phase (LH + 7) (at protein level).

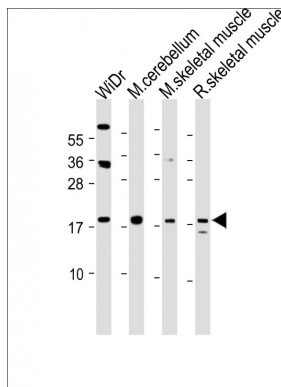
Background

TPPP3 binds tubulin and has microtubule bundling activity. TPPP3 may play a role in cell proliferation and mitosis.

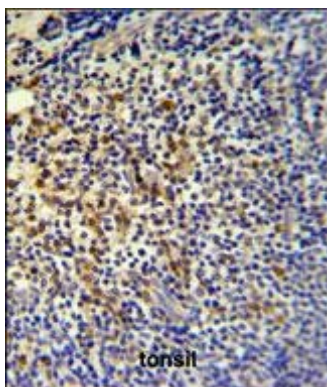
References

Zhou, W., et al. Mol. Cell. Biochem. 333 (1-2), 91-98 (2010) Martins-de-Souza, D., et al. Eur Arch Psychiatry Clin Neurosci 259(3):151-163(2009) Vincze, O., et al. Biochemistry 45(46):13818-13826(2006)

Images

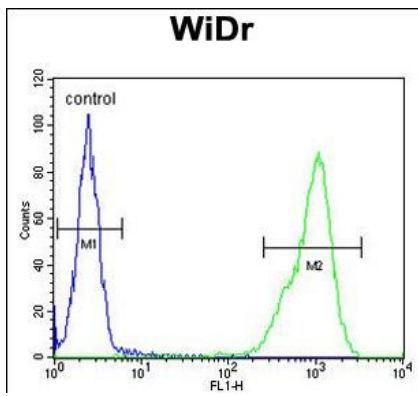


All lanes : Anti-TPPP3 Antibody (C-term) at 1:2000 dilution
Lane 1: WiDr whole cell lysate Lane 2: Mouse cerebellum lysate Lane 3: Mouse skeletal muscle lysate Lane 4: Rat skeletal muscle lysate Lysates/proteins at 20 µg per lane. Secondary Goat Anti-Rabbit IgG, (H+L), Peroxidase conjugated at 1/10000 dilution. Predicted band size : 19 kDa Blocking/Dilution buffer: 5% NFDM/TBST.



TPPP3 Antibody (C-term) (Cat. #AP5004b) IHC analysis in formalin fixed and paraffin embedded tonsil followed by peroxidase conjugation of the secondary antibody and DAB staining. This data demonstrates the use of the TPPP3 Antibody (C-term) for immunohistochemistry. Clinical relevance has not been evaluated.

TPPP3 Antibody (C-term) (Cat. #AP5004b) flow cytometric analysis of WiDr cells (right histogram) compared to a negative control cell (left histogram).FITC-conjugated goat-anti-rabbit secondary antibodies were used for the analysis.



Citations

- [Knockdown of Tubulin Polymerization Promoting Protein Family Member 3 inhibits cell proliferation and invasion in human colorectal cancer.](#)
- [Knockdown of Tubulin Polymerization Promoting Protein Family Member 3 Suppresses Proliferation and Induces Apoptosis in Non-Small-Cell Lung Cancer.](#)
- [TPPP3 inhibits the proliferation, invasion and migration of endometrial carcinoma targeted with miR-1827.](#)

Please note: All products are 'FOR RESEARCH USE ONLY. NOT FOR USE IN DIAGNOSTIC OR THERAPEUTIC PROCEDURES'.