

PHKB Antibody

Purified Rabbit Polyclonal Antibody (Pab)
Catalog # AP50043

Product Information

Application	WB
Primary Accession	Q93100
Reactivity	Human, Mouse
Host	Rabbit
Clonality	polyclonal
Calculated MW	125124 Da

Additional Information

Other Names	Phosphorylase b kinase regulatory subunit beta, Phosphorylase kinase subunit beta, PHKB
Dilution	WB~~1:500- 1:1000
Format	Rabbit IgG in phosphate buffered saline (without Mg ²⁺ and Ca ²⁺), pH 7.4, 150mM NaCl, 0.09% (W/V) sodium azide and 50% glycerol.
Storage Conditions	-20°C

Protein Information

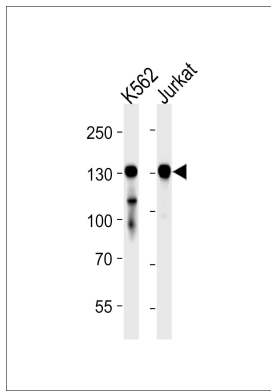
Background

Phosphorylase b kinase catalyzes the phosphorylation of serine in certain substrates, including troponin I. The beta chain acts as a regulatory unit and modulates the activity of the holoenzyme in response to phosphorylation.

References

Wuellrich-Schmoll A., et al. *Eur. J. Biochem.* 238:374-380(1996).
Beausoleil S.A., et al. *Nat. Biotechnol.* 24:1285-1292(2006).
Daub H., et al. *Mol. Cell* 31:438-448(2008).
Dephoure N., et al. *Proc. Natl. Acad. Sci. U.S.A.* 105:10762-10767(2008).
Oppermann F.S., et al. *Mol. Cell. Proteomics* 8:1751-1764(2009).

Images



Western blot analysis of lysates from K562, Jurkat cell line (from left to right), using PHKB Antibody (C11458). C11458 was diluted at 1:1000 at each lane. A goat anti-rabbit IgG H&L (HRP) at 1:5000 dilution was used as the secondary antibody. Lysates at 35 µg per lane.

Please note: All products are 'FOR RESEARCH USE ONLY. NOT FOR USE IN DIAGNOSTIC OR THERAPEUTIC PROCEDURES'.