

p130 Cas Antibody (Ab-410)

Purified Rabbit Polyclonal Antibody (Pab)

Catalog # AP50000

Product Information

Application	WB, IHC
Primary Accession	P56945
Reactivity	Human, Mouse, Rat
Host	Rabbit
Clonality	polyclonal
Calculated MW	93372

Additional Information

Gene ID	9564
Other Names	Breast cancer anti-estrogen resistance protein 1, CRK-associated substrate, Cas scaffolding protein family member 1, p130cas, BCAR1, CAS, CASS1, CRKAS
Dilution	WB~~ 1:1000 IHC~~1:50-1:100
Format	Rabbit IgG in phosphate buffered saline (without Mg2+ and Ca2+), pH 7.4, 150mM NaCl, 0.09% (W/V) sodium azide and 50% glycerol.
Storage Conditions	-20°C

Protein Information

Name	BCAR1
Synonyms	CAS, CASS1, CRKAS
Function	Docking protein which plays a central coordinating role for tyrosine kinase-based signaling related to cell adhesion (PubMed: 12432078 , PubMed: 12832404). Implicated in induction of cell migration and cell branching (PubMed: 12432078 , PubMed: 12832404 , PubMed: 17038317). Involved in the BCAR3-mediated inhibition of TGFB signaling (By similarity).
Cellular Location	Cell junction, focal adhesion. Cytoplasm Cell projection, axon {ECO:0000250 UniProtKB:Q61140} Note=Unphosphorylated form localizes in the cytoplasm (By similarity) Localizes to focal adhesion sites following integrin engagement (By similarity). {ECO:0000250 UniProtKB:Q61140}
Tissue Location	Expressed in B-cells (at protein level) (PubMed:9020138). Widely expressed with an abundant expression in the testis (PubMed:10639512). Low level of expression seen in the liver, thymus, and peripheral blood leukocytes (PubMed:10639512)

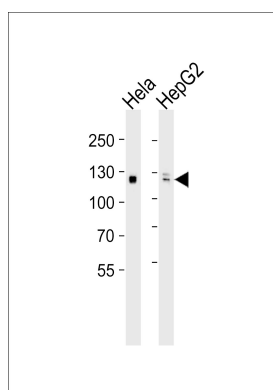
Background

Docking protein which plays a central coordinating role for tyrosine kinase-based signaling related to cell adhesion. Implicated in induction of cell migration. Overexpression confers antiestrogen resistance on breast cancer cells.

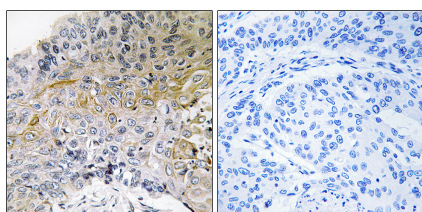
References

Brinkman A.,et al.J. Natl. Cancer Inst. 92:112-120(2000).
Otto E.,et al.Submitted (DEC-1999) to the EMBL/GenBank/DDBJ databases.
Imoto Y.,et al.Submitted (MAR-2000) to the EMBL/GenBank/DDBJ databases.
Lin L.,et al.Submitted (FEB-2004) to the EMBL/GenBank/DDBJ databases.
Ota T.,et al.Nat. Genet. 36:40-45(2004).

Images



Western blot analysis of lysates from HeLa,HepG2 cell line (from left to right),using p130 Cas Antibody (Ab-410) (B0077). B0077 was diluted at 1:1000 at each lane. A goat anti-rabbit IgG H&L(HRP) at 1:5000 dilution was used as the secondary antibody.Lysates at 35ug per lane.



Immunohistochemical analysis of paraffin-embedded human breast carcinoma tissue using p130 Cas (Ab-410) antibody .

Please note: All products are 'FOR RESEARCH USE ONLY. NOT FOR USE IN DIAGNOSTIC OR THERAPEUTIC PROCEDURES'.