

# Phospho-mouse IKKB(S701) Antibody

Affinity Purified Rabbit Polyclonal Antibody (Pab)

Catalog # AP3851a

## Product Information

---

<b>Application</b>	DB, E
<b>Primary Accession</b>	<a href="#">O88351</a>
<b>Other Accession</b>	<a href="#">NP_034676.1</a>
<b>Reactivity</b>	Human, Rat, Mouse
<b>Host</b>	Rabbit
<b>Clonality</b>	Polyclonal
<b>Isotype</b>	Rabbit IgG
<b>Clone Names</b>	RB40105
<b>Calculated MW</b>	86690

## Additional Information

---

<b>Gene ID</b>	16150
<b>Other Names</b>	Inhibitor of nuclear factor kappa-B kinase subunit beta, I-kappa-B-kinase beta, IKK-B, IKK-beta, IkbKB, I-kappa-B kinase 2, IKK2, Nuclear factor NF-kappa-B inhibitor kinase beta, NFKBIKB, Ikbkb, Ikkb
<b>Target/Specificity</b>	This mouse IKKB Antibody is generated from rabbits immunized with a KLH conjugated synthetic phosphopeptide corresponding to amino acid residues surrounding S701 of mouse IKKB.
<b>Dilution</b>	DB~~1:500 E~~Use at an assay dependent concentration.
<b>Format</b>	Purified polyclonal antibody supplied in PBS with 0.09% (W/V) sodium azide. This antibody is purified through a protein A column, followed by peptide affinity purification.
<b>Storage</b>	Maintain refrigerated at 2-8°C for up to 2 weeks. For long term storage store at -20°C in small aliquots to prevent freeze-thaw cycles.
<b>Precautions</b>	Phospho-mouse IKKB(S701) Antibody is for research use only and not for use in diagnostic or therapeutic procedures.

## Protein Information

---

<b>Name</b>	Ikbkb
<b>Synonyms</b>	Ikkb
<b>Function</b>	Serine kinase that plays an essential role in the NF-kappa-B signaling

pathway which is activated by multiple stimuli such as inflammatory cytokines, bacterial or viral products, DNA damages or other cellular stresses (By similarity). Acts as a part of the canonical IKK complex in the conventional pathway of NF-kappa-B activation (By similarity). Phosphorylates inhibitors of NF-kappa-B on 2 critical serine residues (By similarity). These modifications allow polyubiquitination of the inhibitors and subsequent degradation by the proteasome (By similarity). In turn, free NF-kappa-B is translocated into the nucleus and activates the transcription of hundreds of genes involved in immune response, growth control, or protection against apoptosis (By similarity). In addition to the NF-kappa-B inhibitors, phosphorylates several other components of the signaling pathway including NEMO/IKBKG, NF-kappa-B subunits RELA and NFkB1, as well as IKK-related kinases TBK1 and IKBKE (By similarity). IKK-related kinase phosphorylations may prevent the overproduction of inflammatory mediators since they exert a negative regulation on canonical IKKs (By similarity). Phosphorylates FOXO3, mediating the TNF-dependent inactivation of this pro-apoptotic transcription factor (By similarity). Also phosphorylates other substrates including NAA10, NCOA3, BCL10 and IRS1 (By similarity). Phosphorylates RIPK1 at 'Ser-25' which represses its kinase activity and consequently prevents TNF- mediated RIPK1-dependent cell death (PubMed:[30988283](#)). Phosphorylates the C-terminus of IRF5, stimulating IRF5 homodimerization and translocation into the nucleus (PubMed:[25326420](#)). Following bacterial lipopolysaccharide (LPS)-induced TLR4 endocytosis, phosphorylates STAT1 at 'Thr-748' which restricts interferon signaling and anti-inflammatory responses and promotes innate inflammatory responses (PubMed:[38621137](#)). IKBKB-mediated phosphorylation of STAT1 at 'Thr-748' promotes binding of STAT1 to the ARID5A promoter, resulting in transcriptional activation of ARID5A and subsequent ARID5A-mediated stabilization of IL6 (By similarity). It also promotes binding of STAT1 to the IL12B promoter and activation of IL12B transcription (By similarity).

<b>Cellular Location</b>	Cytoplasm {ECO:0000250 UniProtKB:O14920}. Nucleus {ECO:0000250 UniProtKB:O14920}. Membrane raft {ECO:0000250 UniProtKB:O14920}. Note=Colocalized with DPP4 in membrane rafts. {ECO:0000250 UniProtKB:O14920}
<b>Tissue Location</b>	Detected in heart (at protein level) (PubMed:23090968). Expressed in liver, kidney and spleen

## Background

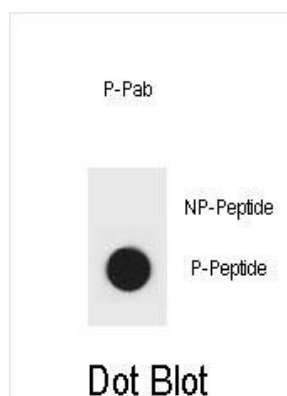
NFKB1 (MIM 164011) or NFKB2 (MIM 164012) is bound to REL (MIM 164910), RELA (MIM 164014), or RELB (MIM 604758) to form the NFKB complex. The NFKB complex is inhibited by I-kappa-B proteins (NFKBIA, MIM 164008, or NFKBIB, MIM 604495), which inactivate NF-kappa-B by trapping it in the cytoplasm. Phosphorylation of serine residues on the I-kappa-B proteins by kinases (IKBKA, MIM 600664, or IKBKB) marks them for destruction via the ubiquitination pathway, thereby allowing activation of the NF-kappa-B complex. Activated NFKB complex translocates into the nucleus and binds DNA at kappa-B-binding motifs such as 5-prime GGGRNNYYCC 3-prime or 5-prime HGGARNYYCC 3-prime (where H is A, C, or T; R is an A or G purine; and Y is a C or T pyrimidine).

## References

Busuttil, V., et al. Proc. Natl. Acad. Sci. U.S.A. 107(42):18061-18066(2010)  
Kenneth, N.S., et al. EMBO J. 29(17):2966-2978(2010)  
Tsuchiya, Y., et al. Mol. Cell 39(4):570-582(2010)  
Farlik, M., et al. Immunity 33(1):25-34(2010)  
Dong, X., et al. PLoS Pathog. 6 (7), E1001001 (2010) :

## Images

---



Dot blot analysis of mouse IKKB Antibody (Phospho S701) Phospho-specific Pab (Cat. #AP3851a) on nitrocellulose membrane. 50ng of Phospho-peptide or Non Phospho-peptide per dot were adsorbed. Antibody working concentrations are 0.6ug per ml.

Please note: All products are 'FOR RESEARCH USE ONLY. NOT FOR USE IN DIAGNOSTIC OR THERAPEUTIC PROCEDURES'.