

# Phospho-PTEN(T382) Antibody

Affinity Purified Rabbit Polyclonal Antibody (Pab)  
Catalog # AP3788e

## Product Information

---

|                          |   |
|--------------------------|---|
| <b>Application</b>       | DB, E   |
| <b>Primary Accession</b> | <a href="#">P60484</a>  |
| <b>Other Accession</b>   | <a href="#">Q9PUT6</a> , <a href="#">O08586</a> , <a href="#">NP_000305.3</a> |
| <b>Reactivity</b>        | Human   |
| <b>Predicted</b>         | Mouse, Xenopus  |
| <b>Host</b>              | Rabbit  |
| <b>Clonality</b>         | Polyclonal  |
| <b>Isotype</b>           | Rabbit IgG  |
| <b>Clone Names</b>       | RB39727   |

## Additional Information

---

|                           |  |
|---------------------------|--|
| <b>Other Names</b>        | Phosphatidylinositol 3, 5-trisphosphate 3-phosphatase and dual-specificity protein phosphatase PTEN, Mutated in multiple advanced cancers 1, Phosphatase and tensin homolog, PTEN, MMAC1, TEP1 |
| <b>Target/Specificity</b> | This PTEN Antibody is generated from rabbits immunized with a KLH conjugated synthetic phosphopeptide corresponding to amino acid residues surrounding T382 of human PTEN.                     |
| <b>Dilution</b>           | DB~1:500 E~Use at an assay dependent concentration.  |
| <b>Format</b>             | Purified polyclonal antibody supplied in PBS with 0.09% (W/V) sodium azide. This antibody is purified through a protein A column, followed by peptide affinity purification.                   |
| <b>Storage</b>            | Maintain refrigerated at 2-8°C for up to 2 weeks. For long term storage store at -20°C in small aliquots to prevent freeze-thaw cycles.  |
| <b>Precautions</b>        | Phospho-PTEN(T382) Antibody is for research use only and not for use in diagnostic or therapeutic procedures.  |

## Protein Information

---

### Background

---

This gene was identified as a tumor suppressor that is mutated in a large number of cancers at high frequency. The protein encoded this gene is a phosphatidylinositol-3,4,5-trisphosphate 3-phosphatase. It contains a tensin like domain as well as a catalytic domain similar to that of the dual specificity protein tyrosine phosphatases. Unlike most of the protein tyrosine phosphatases, this protein preferentially

dephosphorylates phosphoinositide substrates. It negatively regulates intracellular levels of phosphatidylinositol-3,4,5-trisphosphate in cells and functions as a tumor suppressor by negatively regulating AKT/PKB signaling pathway.

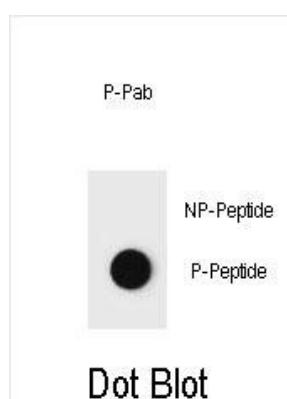
## References

---

Miletic, A.V., et al. *J. Exp. Med.* 207(11):2407-2420(2010)  
Kini, V., et al. *J. Biol. Chem.* 285(43):33082-33091(2010)  
Shimada, M., et al. *Hum. Genet.* 128(4):433-441(2010)  
Molina, J.R., et al. *Cancer Res.* 70(17):6697-6703(2010)  
Iliopoulos, D., et al. *Mol. Cell* 39(4):493-506(2010)

## Images

---



Dot blot analysis of Phospho-PTEN-T382 Antibody Phospho-specific Pab (Cat. #AP3788e) on nitrocellulose membrane. 50ng of Phospho-peptide or Non Phospho-peptide per dot were adsorbed. Antibody working concentrations are 0.6ug per ml.

Please note: All products are 'FOR RESEARCH USE ONLY. NOT FOR USE IN DIAGNOSTIC OR THERAPEUTIC PROCEDURES'.