

Phospho-mouse CASP3(S12) Antibody

Affinity Purified Rabbit Polyclonal Antibody (Pab)

Catalog # AP3778b

Product Information

Application	DB, E
Primary Accession	P70677
Other Accession	NP_033940.1
Reactivity	Mouse
Host	Rabbit
Clonality	Polyclonal
Isotype	Rabbit IgG
Clone Names	RB39711

Additional Information

Other Names	Caspase-3, CASP-3, Apopain, Cysteine protease CPP32, CPP-32, LICE, Protein Yama, SREBP cleavage activity 1, SCA-1, Caspase-3 subunit p17, Caspase-3 subunit p12, Casp3, Cpp32
Target/Specificity	This mouse CASP3 Antibody is generated from rabbits immunized with a KLH conjugated synthetic phosphopeptide corresponding to amino acid residues surrounding S12 of mouse CASP3.
Dilution	DB~~1:500 E~~Use at an assay dependent concentration.
Format	Purified polyclonal antibody supplied in PBS with 0.09% (W/V) sodium azide. This antibody is purified through a protein A column, followed by peptide affinity purification.
Storage	Maintain refrigerated at 2-8°C for up to 2 weeks. For long term storage store at -20°C in small aliquots to prevent freeze-thaw cycles.
Precautions	Phospho-mouse CASP3(S12) Antibody is for research use only and not for use in diagnostic or therapeutic procedures.

Protein Information

Background

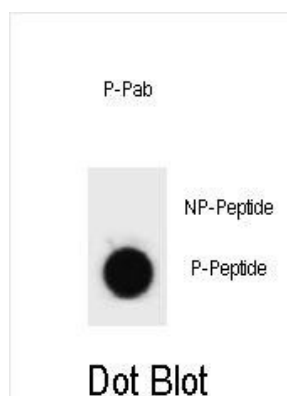
This gene encodes a protein which is a member of the cysteine-aspartic acid protease (caspase) family. Sequential activation of caspases plays a central role in the execution-phase of cell apoptosis. Caspases exist as inactive proenzymes which undergo proteolytic processing at conserved aspartic residues to produce two subunits, large and small, that dimerize to form the active enzyme. This protein cleaves and activates caspases 6, 7 and 9, and the protein itself is processed by caspases 8, 9 and 10. It is the predominant

caspase involved in the cleavage of amyloid-beta 4A precursor protein, which is associated with neuronal death in Alzheimer's disease. Alternative splicing of this gene results in two transcript variants that encode the same protein. [provided by RefSeq].

References

Srikanth, C.V., et al. Science 330(6002):390-393(2010)
Li, F., et al. Cell Stem Cell 7(4):508-520(2010)
Wang, L., et al. J. Neurosci. 30(39):13201-13210(2010)
Gascon, E., et al. J. Neurosci. 30(37):12414-12423(2010)
Bohsali, A., et al. BMC Microbiol. 10, 237 (2010) :

Images



Dot blot analysis of Phospho-mouse CASP3-S12 Antibody Phospho-specific Pab (Cat. #AP3778b) on nitrocellulose membrane. 50ng of Phospho-peptide or Non Phospho-peptide per dot were adsorbed. Antibody working concentrations are 0.6ug per ml.

Please note: All products are 'FOR RESEARCH USE ONLY. NOT FOR USE IN DIAGNOSTIC OR THERAPEUTIC PROCEDURES'.