

Cleaved-APG8b (MAP1LC3B) Antibody

Affinity Purified Rabbit Polyclonal Antibody (Pab)

Catalog # AP3748a

Product Information

Application	DB, E
Primary Accession	Q9GZQ8
Other Accession	O41515 , NP_073729
Reactivity	Human
Predicted	Bovine
Host	Rabbit
Clonality	Polyclonal
Isotype	Rabbit IgG
Clone Names	RB28608
Antigen Region	89-122

Additional Information

Other Names	Microtubule-associated proteins 1A/1B light chain 3B, Autophagy-related protein LC3 B, Autophagy-related ubiquitin-like modifier LC3 B, MAP1 light chain 3-like protein 2, MAP1A/MAP1B light chain 3 B, MAP1A/MAP1B LC3 B, Microtubule-associated protein 1 light chain 3 beta, MAP1LC3B, MAP1ALC3
Target/Specificity	This Cleaved antibody is generated from rabbits immunized with a KLH conjugated synthetic peptide between 89-122 amino acids from human Cleaved.
Dilution	DB~1:500 E~Use at an assay dependent concentration.
Format	Purified polyclonal antibody supplied in PBS with 0.09% (W/V) sodium azide. This antibody is purified through a protein A column, followed by peptide affinity purification.
Storage	Maintain refrigerated at 2-8°C for up to 2 weeks. For long term storage store at -20°C in small aliquots to prevent freeze-thaw cycles.
Precautions	Cleaved-APG8b (MAP1LC3B) Antibody is for research use only and not for use in diagnostic or therapeutic procedures.

Protein Information

Background

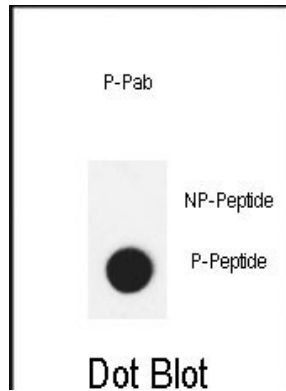
The product of this gene is a subunit of neuronal microtubule-associated MAP1A and MAP1B proteins, which are involved in microtubule assembly and important for neurogenesis. Studies on the rat homolog implicate

a role for this gene in autophagy, a process that involves the bulk degradation of cytoplasmic component.

References

Rouschop, K.M., et al. J. Clin. Invest. 120(1):127-141(2010) Kirkin, V., et al. Mol. Cell 33(4):505-516(2009)
Othman, E.Q., et al. J. Clin. Lab. Anal. 23(4):249-258(2009) Liu, Q., et al. Ai Zheng 27(1):25-29(2008) Komatsu,
M., et al. Cell 131(6):1149-1163(2007)

Images



Dot blot analysis of anti-Cleaved-APG8b (MAP1LC3B) Phospho-specific Pab (Cat. #AP3748a) on nitrocellulose membrane. 50ng of Phospho-peptide or Non Phospho-peptide per dot were adsorbed. Antibody working concentrations are 0.6ug per ml.

Please note: All products are 'FOR RESEARCH USE ONLY. NOT FOR USE IN DIAGNOSTIC OR THERAPEUTIC PROCEDURES'.