

# Phospho-AKT1(S124) Antibody

Affinity Purified Rabbit Polyclonal Antibody (Pab)  
Catalog # AP3715a

## Product Information

---

<b>Application</b>	DB, E
<b>Primary Accession</b>	<a href="#">P31749</a>
<b>Reactivity</b>	Human
<b>Host</b>	Rabbit
<b>Clonality</b>	Polyclonal
<b>Isotype</b>	Rabbit IgG
<b>Clone Names</b>	RB25827

## Additional Information

---

<b>Other Names</b>	RAC-alpha serine/threonine-protein kinase, Protein kinase B, PKB, Protein kinase B alpha, PKB alpha, Proto-oncogene c-Akt, RAC-PK-alpha, AKT1, PKB, RAC
<b>Target/Specificity</b>	This AKT1 Antibody is generated from rabbits immunized with a KLH conjugated synthetic phosphopeptide corresponding to amino acid residues surrounding S124 of human AKT1.
<b>Dilution</b>	DB~~1:500 E~~Use at an assay dependent concentration.
<b>Format</b>	Purified polyclonal antibody supplied in PBS with 0.09% (W/V) sodium azide. This antibody is purified through a protein A column, followed by peptide affinity purification.
<b>Storage</b>	Maintain refrigerated at 2-8°C for up to 2 weeks. For long term storage store at -20°C in small aliquots to prevent freeze-thaw cycles.
<b>Precautions</b>	Phospho-AKT1(S124) Antibody is for research use only and not for use in diagnostic or therapeutic procedures.

## Protein Information

---

### Background

---

The protein encoded by this gene is a member of the transmembrane 4 superfamily, also known as the tetraspanin family. Most of these members are cell-surface proteins that are characterized by the presence of four hydrophobic domains. The proteins mediate signal transduction events that play a role in the regulation of cell development, activation, growth and motility. This encoded protein is a cell surface glycoprotein and may have a role in the control of neurite outgrowth. It is known to complex with integrins. This gene is associated with X-linked mental retardation and neuropsychiatric diseases such as Huntington's

chorea, fragile X syndrome and myotonic dystrophy

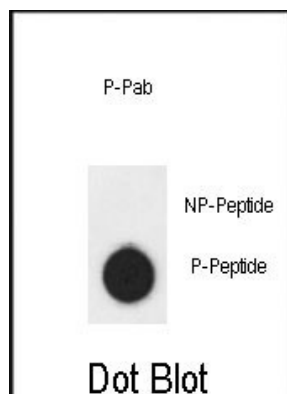
## References

---

Radhakrishnan, Y., et al. Biol. Reprod. 81(4):647-656(2009)  
Guilmatre, A., et al. Arch. Gen. Psychiatry 66(9):947-956(2009)  
Noor, A., et al. Psychiatr. Genet. 19(3):154-155(2009)

## Images

---



Dot blot analysis of anti-AKT1-S124 Phospho-specific Pab (Cat. #AP3715a) on nitrocellulose membrane. 50ng of Phospho-peptide or Non Phospho-peptide per dot were adsorbed. Antibody working concentrations are 0.5ug per ml.

## Citations

---

- [Ephrin-a4 is involved in retinal neovascularization by regulating the VEGF signaling pathway.](#)

Please note: All products are 'FOR RESEARCH USE ONLY. NOT FOR USE IN DIAGNOSTIC OR THERAPEUTIC PROCEDURES'.