

Phospho-IPF(T11) Antibody

Affinity Purified Rabbit Polyclonal Antibody (Pab)
Catalog # AP3617a

Product Information

Application	DB, E
Primary Accession	P52945
Other Accession	P52947 , P52946
Reactivity	Human, Rat, Mouse
Predicted	Mouse, Rat
Host	Rabbit
Clonality	Polyclonal
Isotype	Rabbit IgG
Clone Names	RB16667

Additional Information

Other Names	Pancreas/duodenum homeobox protein 1, PDX-1, Glucose-sensitive factor, GSF, Insulin promoter factor 1, IPF-1, Insulin upstream factor 1, IUF-1, Islet/duodenum homeobox-1, IDX-1, Somatostatin-transactivating factor 1, STF-1, PDX1, IPF1, STF1
Target/Specificity	This IPF Antibody is generated from rabbits immunized with a KLH conjugated synthetic phosphopeptide corresponding to amino acid residues surrounding T11 of human IPF.
Dilution	DB~1:500 E~Use at an assay dependent concentration.
Format	Purified polyclonal antibody supplied in PBS with 0.09% (W/V) sodium azide. This antibody is purified through a protein A column, followed by peptide affinity purification.
Storage	Maintain refrigerated at 2-8°C for up to 2 weeks. For long term storage store at -20°C in small aliquots to prevent freeze-thaw cycles.
Precautions	Phospho-IPF(T11) Antibody is for research use only and not for use in diagnostic or therapeutic procedures.

Protein Information

Background

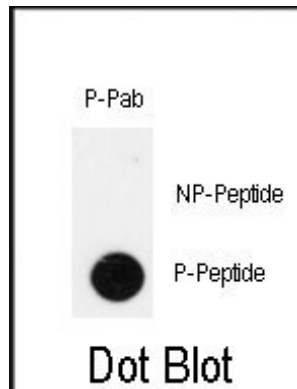
PDX1 is a transcriptional activator of several genes, including insulin, somatostatin, glucokinase, islet amyloid polypeptide, and glucose transporter type 2. The protein is involved in the early development of the pancreas and plays a major role in glucose-dependent regulation of insulin gene expression. Defects in its

gene are a cause of pancreatic agenesis, which can lead to early-onset insulin-dependent diabetes mellitus (NIDDM), as well as maturity onset diabetes of the young type 4 (MODY4).

References

Lebrun P, Montminy MR, Van Obberghen E (2005) J Biol Chem 280, 38203-10

Images



Dot blot analysis of anti-Phospho-IPF-pT11 Antibody (Cat.#AP3617a) on nitrocellulose membrane. 50ng of Phospho-peptide or Non Phospho-peptide per dot were adsorbed. Antibody working concentrations are 0.5ug per ml.

Please note: All products are 'FOR RESEARCH USE ONLY. NOT FOR USE IN DIAGNOSTIC OR THERAPEUTIC PROCEDURES'.