

Phospho-ATM(S1981) Antibody

Affinity Purified Rabbit Polyclonal Antibody (Pab)
Catalog # AP3504a

Product Information

Application	DB, IF, E
Primary Accession	Q13315
Reactivity	Human, Rat, Mouse
Host	Rabbit
Clonality	Polyclonal
Isotype	Rabbit IgG
Clone Names	RB8121

Additional Information

Other Names	Serine-protein kinase ATM, Ataxia telangiectasia mutated, A-T mutated, ATM
Target/Specificity	This Phospho-ATM-pS1981 antibody is generated from rabbits immunized with a KLH conjugated synthetic phosphopeptide corresponding to amino acid residues surrounding S1981 of human ATM.
Dilution	DB~~1:500 IF~~1:10~50 E~~Use at an assay dependent concentration.
Format	Purified polyclonal antibody supplied in PBS with 0.09% (W/V) sodium azide. This antibody is purified through a protein A column, followed by peptide affinity purification.
Storage	Maintain refrigerated at 2-8°C for up to 2 weeks. For long term storage store at -20°C in small aliquots to prevent freeze-thaw cycles.
Precautions	Phospho-ATM(S1981) Antibody is for research use only and not for use in diagnostic or therapeutic procedures.

Protein Information

Background

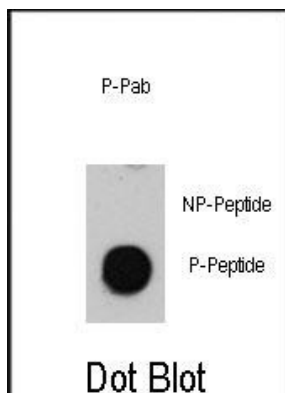
ATM belongs to the PI3/PI4-kinase family. This protein is an important cell cycle checkpoint kinase that phosphorylates; thus, it functions as a regulator of a wide variety of downstream proteins, including tumor suppressor proteins p53 and BRCA1, checkpoint kinase CHK2, checkpoint proteins RAD17 and RAD9, and DNA repair protein NBS1. ATM and the closely related kinase ATR are thought to be master controllers of cell cycle checkpoint signaling pathways that are required for cell response to DNA damage and for genome stability. Mutations in the gene encoding ATM are associated with ataxia telangiectasia, an autosomal recessive disorder.

References

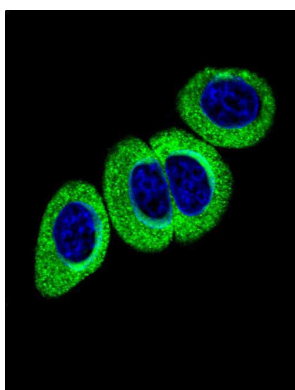
Brunet,J.,Clin. Genet. 73 (5), 465-473 (2008)

Tsai,W.B., Nat. Cell Biol. 10 (4), 460-467 (2008)

Images



Dot blot analysis of anti-Phospho-ATM-pS1981 Antibody (Cat.#AP3504a) on nitrocellulose membrane. 50ng of Phospho-peptide or Non Phospho-peptide per dot were adsorbed. Antibody working concentrations are 0.5ug per ml.



Confocal immunofluorescent analysis of Phospho-ATM-pS1981 Antibody (Cat#AP3504a) with HeLa cell followed by Alexa Fluor 488-conjugated goat anti-rabbit IgG (green). DAPI was used to stain the cell nuclear (blue).

Citations

- [Hepatitis B virus X stimulates redox signaling through activation of ataxia telangiectasia mutated kinase.](#)

Please note: All products are 'FOR RESEARCH USE ONLY. NOT FOR USE IN DIAGNOSTIC OR THERAPEUTIC PROCEDURES'.