

Phospho-STAT3(Y705) Antibody

Affinity Purified Rabbit Polyclonal Antibody (Pab)
Catalog # AP3261a

Product Information

Application	WB, E
Primary Accession	P40763
Other Accession	P52631 , Q19S50 , P42227 , P61635
Reactivity	Human, Rat, Mouse
Predicted	Mouse, Rat, Pig, Bovine
Host	Rabbit
Clonality	Polyclonal
Isotype	Rabbit IgG
Calculated MW	88068

Additional Information

Gene ID	6774
Other Names	Signal transducer and activator of transcription 3, Acute-phase response factor, STAT3, APRF
Target/Specificity	This STAT3 Antibody is generated from rabbits immunized with a KLH conjugated synthetic phosphopeptide corresponding to amino acid residues surrounding Y705 of human STAT3.
Dilution	WB~~1:1000 E~~Use at an assay dependent concentration.
Format	Purified polyclonal antibody supplied in PBS with 0.09% (W/V) sodium azide. This antibody is purified through a protein A column, followed by peptide affinity purification.
Storage	Maintain refrigerated at 2-8°C for up to 2 weeks. For long term storage store at -20°C in small aliquots to prevent freeze-thaw cycles.
Precautions	Phospho-STAT3(Y705) Antibody is for research use only and not for use in diagnostic or therapeutic procedures.

Protein Information

Name	STAT3 {ECO:0000303 PubMed:9630560, ECO:0000312 HGNC:HGNC:11364}
Function	Signal transducer and transcription activator that mediates cellular responses to interleukins, KITLG/SCF, LEP and other growth factors (PubMed: 10688651 , PubMed: 12359225 , PubMed: 12873986 , PubMed: 15194700 , PubMed: 15653507 , PubMed: 16285960 ,

PubMed:[17344214](#), PubMed:[18242580](#), PubMed:[18782771](#), PubMed:[22306293](#), PubMed:[23084476](#), PubMed:[28262505](#), PubMed:[32929201](#), PubMed:[38404237](#)). Once activated, recruits coactivators, such as NCOA1 or MED1, to the promoter region of the target gene (PubMed:[15653507](#), PubMed:[16285960](#), PubMed:[17344214](#), PubMed:[18782771](#), PubMed:[28262505](#), PubMed:[32929201](#)). May mediate cellular responses to activated FGFR1, FGFR2, FGFR3 and FGFR4 (PubMed:[12873986](#)). Upon activation of IL6ST/gp130 signaling by interleukin-6 (IL6), binds to the IL6-responsive elements identified in the promoters of various acute-phase protein genes (PubMed:[12359225](#)). Activated by IL31 through IL31RA (PubMed:[15194700](#)). Acts as a regulator of inflammatory response by regulating differentiation of naive CD4(+) T-cells into T-helper Th17 or regulatory T-cells (Treg): acetylation promotes its transcription activity and cell differentiation while deacetylation and oxidation of lysine residues by LOXL3 inhibits differentiation (PubMed:[28065600](#), PubMed:[28262505](#)). Involved in cell cycle regulation by inducing the expression of key genes for the progression from G1 to S phase, such as CCND1 (PubMed:[17344214](#)). Mediates the effects of LEP on melanocortin production, body energy homeostasis and lactation (By similarity). May play an apoptotic role by transactivating BIRC5 expression under LEP activation (PubMed:[18242580](#)). Cytoplasmic STAT3 represses macroautophagy by inhibiting EIF2AK2/PKR activity (PubMed:[23084476](#)). Plays a crucial role in basal beta cell functions, such as regulation of insulin secretion (By similarity). Following JAK/STAT signaling activation and as part of a complex with NFATC3 and NFATC4, binds to the alpha-beta E4 promoter region of CRYAB and activates transcription in cardiomyocytes (By similarity).

Cellular Location

Cytoplasm. Nucleus Note=Shuttles between the nucleus and the cytoplasm (PubMed:[29162862](#)) Translocated into the nucleus upon tyrosine phosphorylation and dimerization, in response to signaling by activated FGFR1, FGFR2, FGFR3 or FGFR4 (PubMed:[15653507](#), PubMed:[16285960](#)). Constitutive nuclear presence is independent of tyrosine phosphorylation. Predominantly present in the cytoplasm without stimuli. Upon leukemia inhibitory factor (LIF) stimulation, accumulates in the nucleus. The complex composed of BART and ARL2 plays an important role in the nuclear translocation and retention of STAT3. Identified in a complex with LYN and PAG1. Translocates to the nucleus in the presence of EDN1 (By similarity). {ECO:0000250|UniProtKB:P52631, ECO:0000269|PubMed:[15653507](#), ECO:0000269|PubMed:[16285960](#), ECO:0000269|PubMed:[29162862](#)}

Tissue Location

Heart, brain, placenta, lung, liver, skeletal muscle, kidney and pancreas. Expressed in naive CD4(+) T cells as well as T-helper Th17, Th1 and Th2 cells (PubMed:[31899195](#))

Background

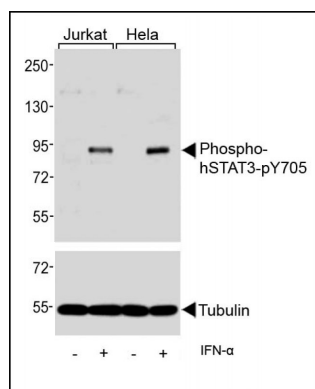
STAT3 is a member of the STAT protein family. In response to cytokines and growth factors, STAT family members are phosphorylated by the receptor associated kinases, and then form homo- or heterodimers that translocate to the cell nucleus where they act as transcription activators. This protein is activated through phosphorylation in response to various cytokines and growth factors including IFNs, EGF, IL5, IL6, HGF, LIF and BMP2. This protein mediates the expression of a variety of genes in response to cell stimuli, and thus plays a key role in many cellular processes such as cell growth and apoptosis. The small GTPase Rac1 has been shown to bind and regulate the activity of this protein. PIAS3 protein is a specific inhibitor of this protein.

References

Schick, N., et al., J. Biol. Chem. 279(37):38787-38796 (2004).

Wang, H., et al., Lab. Invest. 84(8):941-951 (2004).
Kato, T., et al., J. Biol. Chem. 279(30):31076-31080 (2004).
Ivanova, A.V., et al., J. Mol. Biol. 340(4):641-653 (2004).
Park, J., et al., Biochem. Biophys. Res. Commun. 320(1):279-285 (2004).

Images



Western blot analysis of extracts from Jurkat and HeLa cells, untreated or treated with IFN- α (100ng/ml), using Phospho-STAT3-pY705 (upper) or Tubulin (lower).

Citations

- [STAT3 is Activated by CTGF-mediated Tumor-stroma Cross Talk to Promote HCC Progression](#)
- [Role of VHL-JAK-STAT signaling pathway in central nervous system hemangioblastoma associated with von Hippel-Lindau disease](#)
- [Effect of suppressor of cytokine signaling on hepcidin production in hepatitis C virus replicon cells.](#)
- [Cooperation between integrin alpha5 and tetraspan TM4SF5 regulates VEGF-mediated angiogenic activity.](#)
- [Expression of signal transducer and activator of transcription 3 and its phosphorylated form is significantly upregulated in patients with papillary thyroid cancer.](#)
- [Reg3g Promotes Pancreatic Carcinogenesis in a Murine Model of Chronic Pancreatitis.](#)
- [Evodiamine Induces Apoptosis and Inhibits Migration of HCT-116 Human Colorectal Cancer Cells.](#)
- [SOCS3 overexpression inhibits advanced glycation end product-induced EMT in proximal tubule epithelial cells.](#)

Please note: All products are 'FOR RESEARCH USE ONLY. NOT FOR USE IN DIAGNOSTIC OR THERAPEUTIC PROCEDURES'.