

# PRDX6 Antibody (C-term)

Purified Rabbit Polyclonal Antibody (Pab)  
Catalog # AP2927b

## Product Information

---

<b>Application</b>	WB, IHC-P, FC, E
<b>Primary Accession</b>	<a href="#">P30041</a>
<b>Other Accession</b>	<a href="#">O35244</a> , <a href="#">Q9TSX9</a> , <a href="#">O08709</a> , <a href="#">Q2PFL9</a> , <a href="#">Q5ZJF4</a> , <a href="#">O77834</a>
<b>Reactivity</b>	Human
<b>Predicted</b>	Bovine, Chicken, Monkey, Mouse, Pig, Rat
<b>Host</b>	Rabbit
<b>Clonality</b>	Polyclonal
<b>Isotype</b>	Rabbit IgG
<b>Clone Names</b>	RB20894
<b>Antigen Region</b>	197-224

## Additional Information

---

<b>Other Names</b>	Peroxiredoxin-6, 1-Cys peroxiredoxin, 1-Cys PRX, 24 kDa protein, Acidic calcium-independent phospholipase A2, aiPLA2, 311-, Antioxidant protein 2, Liver 2D page spot 40, Non-selenium glutathione peroxidase, NSGPx, Red blood cells page spot 12, PRDX6, AOP2, KIAA0106
<b>Target/Specificity</b>	This PRDX6 antibody is generated from rabbits immunized with a KLH conjugated synthetic peptide between 197-224 amino acids from the C-terminal region of human PRDX6.
<b>Dilution</b>	WB~~1:1000 IHC-P~~1:100~500 FC~~1:10~50 E~~Use at an assay dependent concentration.
<b>Format</b>	Purified polyclonal antibody supplied in PBS with 0.09% (W/V) sodium azide. This antibody is prepared by Saturated Ammonium Sulfate (SAS) precipitation followed by dialysis against PBS.
<b>Storage</b>	Maintain refrigerated at 2-8°C for up to 2 weeks. For long term storage store at -20°C in small aliquots to prevent freeze-thaw cycles.
<b>Precautions</b>	PRDX6 Antibody (C-term) is for research use only and not for use in diagnostic or therapeutic procedures.

## Protein Information

---

### Background

---

PRDX6 is a member of the thiol-specific antioxidant protein family. This protein is a bifunctional enzyme with

two distinct active sites. It is involved in redox regulation of the cell; it can reduce H<sub>2</sub>O<sub>2</sub> and short chain organic, fatty acid, and phospholipid hydroperoxides. It may play a role in the regulation of phospholipid turnover as well as in protection against oxidative injury.

## References

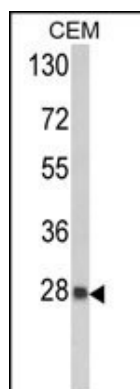
---

Sorokina, E.M., et al., *Am. J. Physiol. Lung Cell Mol. Physiol.* 297 (5), L871-L880 (2009)

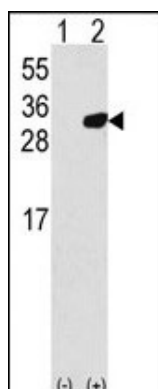
Manevich, Y., et al., *Arch. Biochem. Biophys.* 485 (2), 139-149 (2009)

## Images

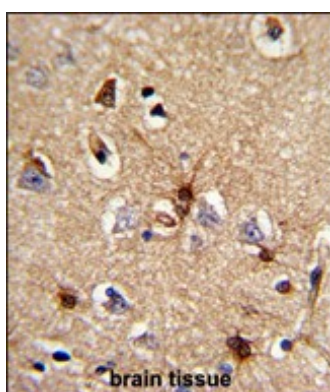
---



Western blot analysis of PRDX6 Antibody (C-term) (Cat. #AP2927b) in CEM cell line lysates (35ug/lane). PRDX6 (arrow) was detected using the purified Pab.

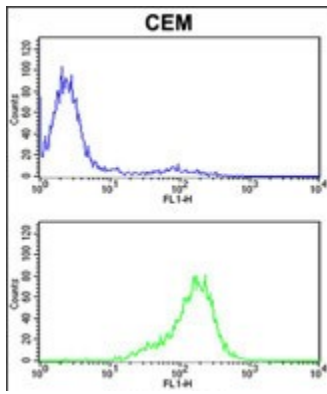


Western blot analysis of PRDX6 (arrow) using rabbit polyclonal PRDX6 Antibody (C-term) (RB20894). 293 cell lysates (2 ug/lane) either nontransfected (Lane 1) or transiently transfected with the PRDX6 gene (Lane 2).



Formalin-fixed and paraffin-embedded human brain tissue reacted with PRDX6 Antibody (C-term), which was peroxidase-conjugated to the secondary antibody, followed by DAB staining. This data demonstrates the use of this antibody for immunohistochemistry; clinical relevance has not been evaluated.

PRDX6 Antibody (C-term) (Cat. #AP2927b) flow cytometric analysis of CEM cells (bottom histogram) compared to a negative control cell (top histogram). FITC-conjugated goat-anti-rabbit secondary antibodies were used for the analysis.



Please note: All products are 'FOR RESEARCH USE ONLY. NOT FOR USE IN DIAGNOSTIC OR THERAPEUTIC PROCEDURES'.