

TPI1 Antibody (C-term)

Purified Rabbit Polyclonal Antibody (Pab)

Catalog # AP2917b

Product Information

Application	IHC-P, FC, WB, E
Primary Accession	P60174
Other Accession	P48500 , P00939 , P17751 , Q60HC9 , Q5E956
Reactivity	Human, Rat, Mouse
Predicted	Bovine, Monkey, Rabbit, Rat
Host	Rabbit
Clonality	Polyclonal
Isotype	Rabbit IgG
Clone Names	RB20862
Calculated MW	26669
Antigen Region	258-286

Additional Information

Gene ID	7167
Other Names	Triosephosphate isomerase, TIM, Triose-phosphate isomerase, TPI1, TPI
Target/Specificity	This TPI1 antibody is generated from rabbits immunized with a KLH conjugated synthetic peptide between 258-286 amino acids from the C-terminal region of human TPI1.
Dilution	IHC-P~~1:100~500 FC~~1:10~50 WB~~1:1000 E~~Use at an assay dependent concentration.
Format	Purified polyclonal antibody supplied in PBS with 0.09% (W/V) sodium azide. This antibody is prepared by Saturated Ammonium Sulfate (SAS) precipitation followed by dialysis against PBS.
Storage	Maintain refrigerated at 2-8°C for up to 2 weeks. For long term storage store at -20°C in small aliquots to prevent freeze-thaw cycles.
Precautions	TPI1 Antibody (C-term) is for research use only and not for use in diagnostic or therapeutic procedures.

Protein Information

Name	TPI1 (HGNC:12009)
Synonyms	TPI

Function	Triosephosphate isomerase is an extremely efficient metabolic enzyme that catalyzes the interconversion between dihydroxyacetone phosphate (DHAP) and D-glyceraldehyde-3-phosphate (G3P) in glycolysis and gluconeogenesis.
Cellular Location	Cytoplasm {ECO:0000255 PROSITE-ProRule:PRU10127}.

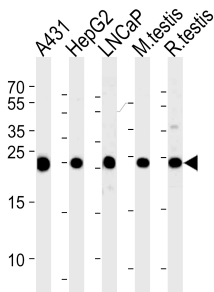
Background

TPI1 is an enzyme, consisting of two identical proteins, which catalyzes the isomerization of glyceraldehydes 3-phosphate (G3P) and dihydroxy-acetone phosphate (DHAP) in glycolysis and gluconeogenesis.

References

Martins-de-Souza,D., et.al., BMC Psychiatry 9, 17 (2009)

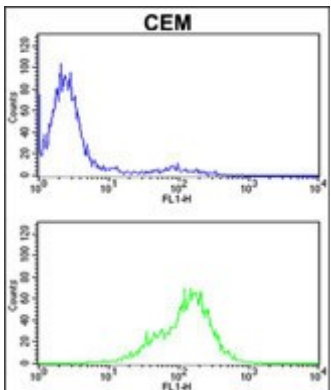
Images



Western blot analysis of lysates from A431, HepG2, LNCaP cell line and mouse testis, rat testis tissue lysates (from left to right), using TPI1 Antibody (C-term) (Cat. #AP2917b). AP2917b was diluted at 1:1000 at each lane.A goat anti-rabbit IgG H&L(HRP) at 1:5000 dilution was used as the secondary antibody. Lysate at 35ug per lane.



Formalin-fixed and paraffin-embedded human prostate carcinoma reacted with TPI1 Antibody (C-term), which was peroxidase-conjugated to the secondary antibody, followed by DAB staining. This data demonstrates the use of this antibody for immunohistochemistry; clinical relevance has not been evaluated.



TPI1 Antibody (C-term) (Cat. #AP2917b) flow cytometric analysis of CEM cells (bottom histogram) compared to a negative control cell (top histogram).FITC-conjugated goat-anti-rabbit secondary antibodies were used for the analysis.

Please note: All products are 'FOR RESEARCH USE ONLY. NOT FOR USE IN DIAGNOSTIC OR THERAPEUTIC PROCEDURES'.