

CD36 Antibody (Center)

Purified Rabbit Polyclonal Antibody (Pab)

Catalog # AP2883c

Product Information

Application	WB, IHC-P, IF, FC, E
Primary Accession	P16671
Reactivity	Human, Rat, Mouse
Host	Rabbit
Clonality	Polyclonal
Isotype	Rabbit IgG
Clone Names	RB19992
Calculated MW	53053
Antigen Region	213-242

Additional Information

Gene ID	948
Other Names	Platelet glycoprotein 4, Fatty acid translocase, FAT, Glycoprotein IIIb, GPIIIB, Leukocyte differentiation antigen CD36, PAS IV, PAS-4, Platelet collagen receptor, Platelet glycoprotein IV, GPIV, Thrombospondin receptor, CD36, CD36, GP3B, GP4
Target/Specificity	This CD36 antibody is generated from rabbits immunized with a KLH conjugated synthetic peptide between 213-242 amino acids from the Central region of human CD36.
Dilution	WB~~1:1000 IHC-P~~1:100~500 IF~~1:10~50 FC~~1:10~50 E~~Use at an assay dependent concentration.
Format	Purified polyclonal antibody supplied in PBS with 0.09% (W/V) sodium azide. This antibody is prepared by Saturated Ammonium Sulfate (SAS) precipitation followed by dialysis against PBS.
Storage	Maintain refrigerated at 2-8°C for up to 2 weeks. For long term storage store at -20°C in small aliquots to prevent freeze-thaw cycles.
Precautions	CD36 Antibody (Center) is for research use only and not for use in diagnostic or therapeutic procedures.

Protein Information

Name	CD36
Synonyms	GP3B, GP4

Function

Multifunctional glycoprotein that acts as a receptor for a broad range of ligands. Ligands can be of proteinaceous nature like thrombospondin, fibronectin, collagen or amyloid-beta as well as of lipidic nature such as oxidized low-density lipoprotein (oxLDL), anionic phospholipids, long-chain fatty acids and bacterial diacylated lipopeptides. They are generally multivalent and can therefore engage multiple receptors simultaneously, the resulting formation of CD36 clusters initiates signal transduction and internalization of receptor- ligand complexes. The dependency on coreceptor signaling is strongly ligand specific. Cellular responses to these ligands are involved in angiogenesis, inflammatory response, fatty acid metabolism, taste and dietary fat processing in the intestine (Probable). Binds long-chain fatty acids and facilitates their transport into cells, thus participating in muscle lipid utilization, adipose energy storage, and gut fat absorption (By similarity) (PubMed:[18353783](#), PubMed:[21395585](#), PubMed:[21610069](#)). Mechanistically, palmitoylated CD36 captures fatty acids on the cell surface, the binding of fatty acids activates downstream kinase LYN, which phosphorylates the palmitoyltransferase ZDHHC5 and inactivates it, resulting in the subsequent depalmitoylation of CD36, a step needed to initiate the endocytic process and delivery of fatty acids into the cell (PubMed:[32958780](#)). In the small intestine, plays a role in proximal absorption of dietary fatty acid and cholesterol for optimal chylomicron formation, possibly through the activation of MAPK1/3 (ERK1/2) signaling pathway (By similarity) (PubMed:[18753675](#)). Involved in oral fat perception and preferences (PubMed:[22240721](#), PubMed:[25822988](#)). Detection into the tongue of long- chain fatty acids leads to a rapid and sustained rise in flux and protein content of pancreatobiliary secretions (By similarity). In taste receptor cells, mediates the induction of an increase in intracellular calcium levels by long-chain fatty acids, leading to the activation of the gustatory neurons in the nucleus of the solitary tract (By similarity). Important factor in both ventromedial hypothalamus neuronal sensing of long-chain fatty acid and the regulation of energy and glucose homeostasis (By similarity). Receptor for thrombospondins, THBS1 and THBS2, mediating their antiangiogenic effects (By similarity). Involved in inducing apoptosis in podocytes in response to elevated free fatty acids, acting together with THBS1 (By similarity). As a coreceptor for TLR4:TLR6 heterodimer, promotes inflammation in monocytes/macrophages. Upon ligand binding, such as oxLDL or amyloid-beta 42, interacts with the heterodimer TLR4:TLR6, the complex is internalized and triggers inflammatory response, leading to NF-kappa-B-dependent production of CXCL1, CXCL2 and CCL9 cytokines, via MYD88 signaling pathway, and CCL5 cytokine, via TICAM1 signaling pathway, as well as IL1B secretion, through the priming and activation of the NLRP3 inflammasome (By similarity) (PubMed:[20037584](#)). Selective and nonredundant sensor of microbial diacylated lipopeptide that signal via TLR2:TLR6 heterodimer, this cluster triggers signaling from the cell surface, leading to the NF-kappa-B-dependent production of TNF, via MYD88 signaling pathway and subsequently is targeted to the Golgi in a lipid-raft dependent pathway (By similarity) (PubMed:[16880211](#)).

Cellular Location

Cell membrane; Multi-pass membrane protein. Membrane raft. Golgi apparatus. Apical cell membrane {ECO:0000250|UniProtKB:Q08857}. Note=Upon ligand-binding, internalized through dynamin-dependent endocytosis.

Background

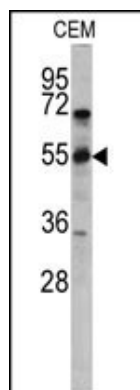
CD36 is the fourth major glycoprotein of the platelet surface and serves as a receptor for thrombospondin in platelets and various cell lines. Since thrombospondins are widely distributed proteins involved in a variety of adhesive processes, this protein may have important functions as a cell adhesion molecule. It binds to collagen, thrombospondin, anionic phospholipids and oxidized LDL. It directly mediates cytoadherence of *Plasmodium falciparum* parasitized erythrocytes and it binds long chain fatty acids and may function in the

transport and/or as a regulator of fatty acid transport. Mutations in its gene cause platelet glycoprotein deficiency.

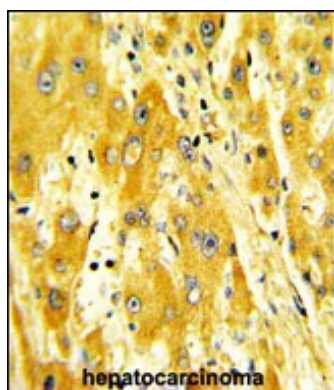
References

Fry,A.E., Hum. Mol. Genet. 18 (14), 2683-2692 (2009) Chilongola,J., Trop. Med. Int. Health 14 (7), 810-816 (2009)

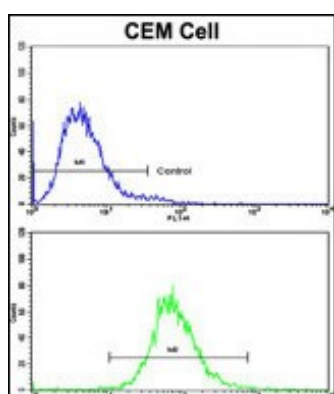
Images



Western blot analysis of CD36 antibody (Center) (Cat. #AP2883c) in CEM cell line lysates (35ug/lane). CD36 (arrow) was detected using the purified Pab.

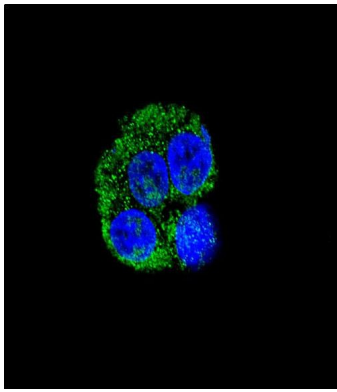


Formalin-fixed and paraffin-embedded human hepatocarcinoma with CD36 Antibody (Center), which was peroxidase-conjugated to the secondary antibody, followed by DAB staining. This data demonstrates the use of this antibody for immunohistochemistry; clinical relevance has not been evaluated.



Flow cytometric analysis of CEM cells using CD36 Antibody (Center)(bottom histogram) compared to a negative control cell (top histogram). FITC-conjugated goat-anti-rabbit secondary antibodies were used for the analysis.

Confocal immunofluorescent analysis of CD36 Antibody (Center)(Cat#AP2883c) with HepG2 cell followed by Alexa Fluor® 488-conjugated goat anti-rabbit IgG (green). DAPI was used to stain the cell nuclear (blue).



Citations

- [The SGLT2 inhibitor empagliflozin negatively regulates IL-17/IL-23 axis-mediated inflammatory responses in T2DM with NAFLD via the AMPK/mTOR/autophagy pathway](#)
- [Glucose transporter expression and regulation following a fast in the ruby-throated hummingbird](#)

Please note: All products are 'FOR RESEARCH USE ONLY. NOT FOR USE IN DIAGNOSTIC OR THERAPEUTIC PROCEDURES'.