

CDA Antibody (C-term)

Purified Rabbit Polyclonal Antibody (Pab)

Catalog # AP2868b

Product Information

Application	WB, E
Primary Accession	P32320
Reactivity	Human, Mouse
Host	Rabbit
Clonality	Polyclonal
Isotype	Rabbit IgG
Calculated MW	16185
Antigen Region	118-146

Additional Information

Gene ID	978
Other Names	Cytidine deaminase, Cytidine aminohydrolase, CDA, CDD
Target/Specificity	This CDA antibody is generated from rabbits immunized with a KLH conjugated synthetic peptide between 118-146 amino acids from the C-terminal region of human CDA.
Dilution	WB~~1:500 E~~Use at an assay dependent concentration.
Format	Purified polyclonal antibody supplied in PBS with 0.09% (W/V) sodium azide. This antibody is prepared by Saturated Ammonium Sulfate (SAS) precipitation followed by dialysis against PBS.
Storage	Maintain refrigerated at 2-8°C for up to 2 weeks. For long term storage store at -20°C in small aliquots to prevent freeze-thaw cycles.
Precautions	CDA Antibody (C-term) is for research use only and not for use in diagnostic or therapeutic procedures.

Protein Information

Name	CDA (HGNC:1712)
Synonyms	CDD
Function	This enzyme scavenges exogenous and endogenous cytidine and 2'-deoxycytidine for UMP synthesis.
Tissue Location	Highly expressed in granulocytes while expression is very low in fibroblasts,

Background

CDA forms a homotetramer that catalyzes the irreversible hydrolytic deamination of cytidine and deoxycytidine to uridine and deoxyuridine, respectively. This protein is one of several deaminases responsible for maintaining the cellular pyrimidine pool. Mutations in the CDA gene are associated with decreased sensitivity to the cytosine nucleoside analogue cytosine arabinoside used in the treatment of certain childhood leukemias.

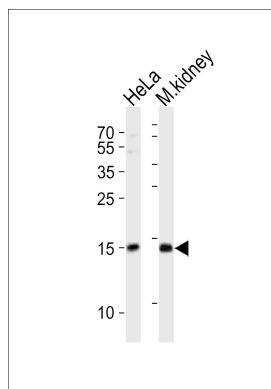
References

Laliberte J., Momparler R.L.Cancer Res. 54:5401-5407(1994)

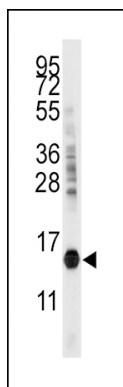
Demontis S., Terao M.Biochim. Biophys. Acta 1443:323-333(1998)

Kuhn K., Bertling W.M., Emmrich F.Biochem. Biophys. Res. Commun. 190:1-7(1993)

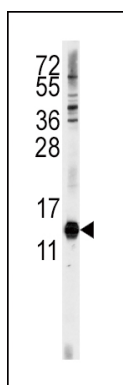
Images



Western blot analysis of lysates from HeLa cell line, mouse kidney tissue lysate (from left to right), using CDA Antibody (C-term)(Cat. #AP2868b). AP2868b was diluted at 1:1000 at each lane. A goat anti-rabbit IgG H&L(HRP) at 1:10000 dilution was used as the secondary antibody. Lysates at 20ug per lane.



Western blot analysis of anti-CDA Antibody (C-term) (Cat. #AP2868b) in mouse kidney tissue lysates (35ug/lane). CDA (arrow) was detected using the purified Pab.



Western blot analysis of anti-CDA Antibody (C-term) (Cat. #AP2868b) in HeLa cell line lysates (35ug/lane). CDA (arrow) was detected using the purified Pab.

Please note: All products are 'FOR RESEARCH USE ONLY. NOT FOR USE IN DIAGNOSTIC OR THERAPEUTIC PROCEDURES'.