

HSPH1 Antibody (Center)

Purified Rabbit Polyclonal Antibody (Pab)

Catalog # AP2860d

Product Information

Application	WB, IHC-P, FC, E
Primary Accession	Q92598
Other Accession	Q66HA8 , Q60446 , Q0IIM3
Reactivity	Human
Predicted	Bovine, Hamster, Rat
Host	Rabbit
Clonality	Polyclonal
Isotype	Rabbit IgG
Clone Names	RB16529
Calculated MW	96865
Antigen Region	549-579

Additional Information

Gene ID	10808
Other Names	Heat shock protein 105 kDa, Antigen NY-CO-25, Heat shock 110 kDa protein, HSPH1, HSP105, HSP110, KIAA0201
Target/Specificity	This HSPH1 antibody is generated from rabbits immunized with a KLH conjugated synthetic peptide between 549-579 amino acids from the Central region of human HSPH1.
Dilution	WB~~1:1000 IHC-P~~1:100~500 FC~~1:10~50 E~~Use at an assay dependent concentration.
Format	Purified polyclonal antibody supplied in PBS with 0.09% (W/V) sodium azide. This antibody is prepared by Saturated Ammonium Sulfate (SAS) precipitation followed by dialysis against PBS.
Storage	Maintain refrigerated at 2-8°C for up to 2 weeks. For long term storage store at -20°C in small aliquots to prevent freeze-thaw cycles.
Precautions	HSPH1 Antibody (Center) is for research use only and not for use in diagnostic or therapeutic procedures.

Protein Information

Name	HSPH1
Synonyms	HSP105, HSP110, KIAA0201

Function	Acts as a nucleotide-exchange factor (NEF) for chaperone proteins HSPA1A and HSPA1B, promoting the release of ADP from HSPA1A/B thereby triggering client/substrate protein release (PubMed: 24318877). Prevents the aggregation of denatured proteins in cells under severe stress, on which the ATP levels decrease markedly. Inhibits HSPA8/HSC70 ATPase and chaperone activities (By similarity).
Cellular Location	Cytoplasm.
Tissue Location	Highly expressed in testis. Present at lower levels in most brain regions, except cerebellum. Overexpressed in cancer cells.

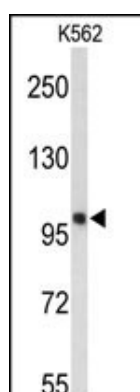
Background

HSPH1 prevents the aggregation of denatured proteins in cells under severe stress, on which the ATP levels decrease markedly. This protein inhibits HSPA8/HSC70 ATPase and chaperone activities.

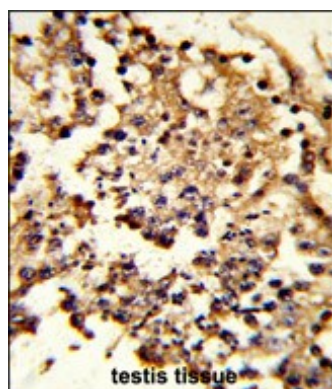
References

Ishihara K., Yasuda K., Hatayama T. *Biochim. Biophys. Acta* 1444:138-142(1999)
 Nagase T., Seki N., Ishikawa K., Ohira M., Kawarabayasi Y., *DNA Res.* 3:321-329(1996)
 The MGC Project Team *Genome Res.* 14:2121-2127(2004)
 Miyazaki M., Nakatsura T., Yokomine K., Senju S., Monji M., Hosaka S., *Cancer Sci.* 96:695-705(2005)

Images

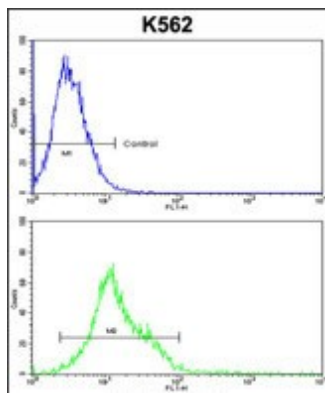


Western blot analysis of HSPH1 Antibody (Center) (Cat. #AP2860d) in K562 cell line lysates (35ug/lane). HSPH1 (arrow) was detected using the purified Pab.



Formalin-fixed and paraffin-embedded human testis tissue reacted with HSPH1 Antibody (Center), which was peroxidase-conjugated to the secondary antibody, followed by DAB staining. This data demonstrates the use of this antibody for immunohistochemistry; clinical relevance has not been evaluated.

HSPH1 Antibody (Center) (Cat. #AP2860d) flow cytometric analysis of k562 cells (bottom histogram) compared to a negative control cell (top histogram). FITC-conjugated goat-anti-rabbit secondary antibodies were used for the analysis.



Please note: All products are 'FOR RESEARCH USE ONLY. NOT FOR USE IN DIAGNOSTIC OR THERAPEUTIC PROCEDURES'.