

MCAM Antibody (C-term)

Affinity Purified Rabbit Polyclonal Antibody (Pab)
Catalog # AP2767b

Product Information

Application	WB, IHC-P, E
Primary Accession	P43121
Reactivity	Human
Host	Rabbit
Clonality	Polyclonal
Isotype	Rabbit IgG
Clone Names	RB20607
Antigen Region	532-558

Additional Information

Other Names	Cell surface glycoprotein MUC18, Cell surface glycoprotein P1H12, Melanoma cell adhesion molecule, Melanoma-associated antigen A32, Melanoma-associated antigen MUC18, S-endo 1 endothelial-associated antigen, CD146, MCAM, MUC18
Target/Specificity	This MCAM antibody is generated from rabbits immunized with a KLH conjugated synthetic peptide between 532-558 amino acids from the C-terminal region of human MCAM.
Dilution	WB~~1:1000 IHC-P~~1:100~500 E~~Use at an assay dependent concentration.
Format	Purified polyclonal antibody supplied in PBS with 0.09% (W/V) sodium azide. This antibody is purified through a protein A column, followed by peptide affinity purification.
Storage	Maintain refrigerated at 2-8°C for up to 2 weeks. For long term storage store at -20°C in small aliquots to prevent freeze-thaw cycles.
Precautions	MCAM Antibody (C-term) is for research use only and not for use in diagnostic or therapeutic procedures.

Protein Information

Background

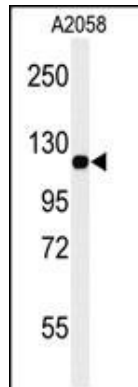
MCAM plays a role in cell adhesion, and in cohesion of the endothelial monolayer at intercellular junctions in vascular tissue. Its expression may allow melanoma cells to interact with cellular elements of the vascular system, thereby enhancing hematogeneous tumor spread. It could be an adhesion molecule active in neural crest cells during embryonic development. It acts as surface receptor that triggers tyrosine phosphorylation

of FYN and PTK2, and a transient increase in the intracellular calcium concentration.

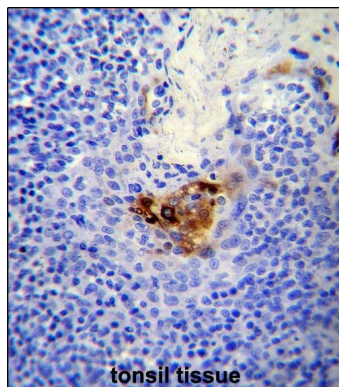
References

Fritzsche, F.R., Pathology 40 (5), 457-464 (2008)
Malyszko, J., Clin. Appl. Thromb. Hemost. 14 (3), 338-345 (2008)
Guezguez, B., J. Immunol. 179 (10), 6673-6685 (2007)

Images



Western blot analysis of MCAM Antibody (C-term) (Cat. #AP2767b) in A2058 cell line lysates (35ug/lane). MCAM (arrow) was detected using the purified Pab.



MCAM Antibody (C-term) (Cat. #AP2767b) immunohistochemistry analysis in formalin fixed and paraffin embedded human tonsil tissue followed by peroxidase conjugation of the secondary antibody and DAB staining. This data demonstrates the use of MCAM Antibody (C-term) for immunohistochemistry. Clinical relevance has not been evaluated.

Please note: All products are 'FOR RESEARCH USE ONLY. NOT FOR USE IN DIAGNOSTIC OR THERAPEUTIC PROCEDURES'.