

# KLF4 Antibody (N-term)

Purified Rabbit Polyclonal Antibody (Pab)

Catalog # AP2725d

## Product Information

---

<b>Application</b>	WB, E
<b>Primary Accession</b>	<a href="#">O43474</a>
<b>Other Accession</b>	<a href="#">NP_004226</a>
<b>Reactivity</b>	Human
<b>Host</b>	Rabbit
<b>Clonality</b>	Polyclonal
<b>Isotype</b>	Rabbit IgG
<b>Antigen Region</b>	20-53

## Additional Information

---

<b>Other Names</b>	Kruppel-like factor 4, Epithelial zinc finger protein EZF, Gut-enriched krueppel-like factor, KLF4, EZF, GKLF
<b>Target/Specificity</b>	This KLF4 antibody is generated from rabbits immunized with a KLH conjugated synthetic peptide between 20-53 amino acids from the N-terminal region of human KLF4.
<b>Dilution</b>	WB~1:1000 E~Use at an assay dependent concentration.
<b>Format</b>	Purified polyclonal antibody supplied in PBS with 0.09% (W/V) sodium azide. This antibody is prepared by Saturated Ammonium Sulfate (SAS) precipitation followed by dialysis against PBS.
<b>Storage</b>	Maintain refrigerated at 2-8°C for up to 2 weeks. For long term storage store at -20°C in small aliquots to prevent freeze-thaw cycles.
<b>Precautions</b>	KLF4 Antibody (N-term) is for research use only and not for use in diagnostic or therapeutic procedures.

## Protein Information

---

### Background

---

Kruppel-like factor 4 (KLF4) is a transcription factor involved in both proliferation and differentiation in the colon. It is down-regulated in both mouse and human colonic adenomas and has been implicated as a tumor suppressor in the gut, whereas in breast cancer, KLF4 is an oncogene. KLF4 is also involved in reprogramming differentiated cells into pluripotent stem cells. KLF4 can act as a transcriptional activator or repressor, but the underlying mechanisms are poorly understood.

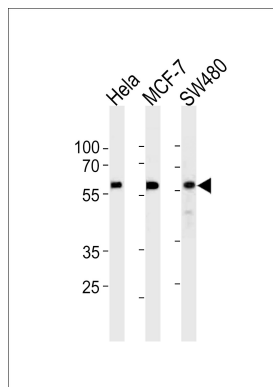
## References

---

- Alder,J.K., J. Immunol. 180 (8), 5645-5652 (2008)  
Natesampillai,S., Am. J. Physiol. Endocrinol. Metab. 294 (2), E385-E391 (2008)  
Evans,P.M., J. Biol. Chem. 282 (47), 33994-34002 (2007)  
Behr,R., Mol. Hum. Reprod. 13 (11), 815-820 (2007)

## Images

---



KLF4 Antibody (N-term) (Cat. #AP2725d) western blot analysis in HeLa,MCF-7,SW480 cell line lysates (35ug/lane).This demonstrates the KLF4 antibody detected the KLF4 protein (arrow).

## Citations

---

- [Regulation of the human HBA genes by KLF4 in erythroid cell lines.](#)
- [Pluripotent stem cells derived from mouse and human white mature adipocytes.](#)
- [MiR-32 promotes gastric carcinoma tumorigenesis by targeting Kruppel-like factor 4.](#)
- [MicroRNA-145 protects follicular granulosa cells against oxidative stress-induced apoptosis by targeting Krüppel-like factor 4.](#)

Please note: All products are 'FOR RESEARCH USE ONLY. NOT FOR USE IN DIAGNOSTIC OR THERAPEUTIC PROCEDURES'.