

# HERV (ERVWE1) Antibody (Center)

Purified Rabbit Polyclonal Antibody (Pab)

Catalog # AP2716C

## Product Information

---

<b>Application</b>	WB, IHC-P, E
<b>Primary Accession</b>	<a href="#">Q9UQF0</a>
<b>Reactivity</b>	Human
<b>Host</b>	Rabbit
<b>Clonality</b>	Polyclonal
<b>Isotype</b>	Rabbit IgG
<b>Antigen Region</b>	400-429

## Additional Information

---

<b>Other Names</b>	Syncytin-1, Endogenous retrovirus group W member 1, Env-W, Envelope polyprotein gPr73, Enverin, HERV-7q Envelope protein, HERV-W envelope protein, HERV-W_7q212 provirus ancestral Env polyprotein, Syncytin, Surface protein, SU, gp50, Transmembrane protein, TM, gp24, ERVW-1, ERVWE1
<b>Target/Specificity</b>	This HERV (ERVWE1) antibody is generated from rabbits immunized with a KLH conjugated synthetic peptide between 400-429 amino acids from the Central region of human HERV (ERVWE1).
<b>Dilution</b>	WB~1:1000 IHC-P~1:100 E~Use at an assay dependent concentration.
<b>Format</b>	Purified polyclonal antibody supplied in PBS with 0.09% (W/V) sodium azide. This antibody is prepared by Saturated Ammonium Sulfate (SAS) precipitation followed by dialysis against PBS.
<b>Storage</b>	Maintain refrigerated at 2-8°C for up to 2 weeks. For long term storage store at -20°C in small aliquots to prevent freeze-thaw cycles.
<b>Precautions</b>	HERV (ERVWE1) Antibody (Center) is for research use only and not for use in diagnostic or therapeutic procedures.

## Protein Information

---

### Background

---

Many different human endogenous retrovirus (HERV) families are expressed in normal placental tissue at high levels, suggesting that HERVs are functionally important in reproduction. The protein, also known as syncytin, is expressed in the placental syncytiotrophoblast and is involved in fusion of the cytotrophoblast cells to form the syncytial layer of the placenta. This protein has the characteristics of a typical retroviral envelope protein, including a furin cleavage site that separates the surface (SU) and transmembrane (TM)

proteins which form a heterodimer.

## References

---

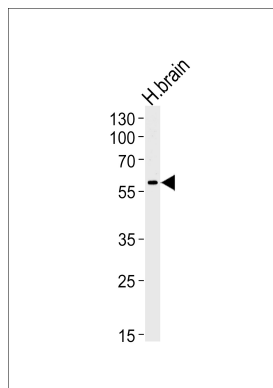
Oluwole,S.O., Amyotroph Lateral Scler 8 (2), 67-72 (2007)

Gong,R., Cell. Physiol. Biochem. 20 (5), 517-526 (2007)

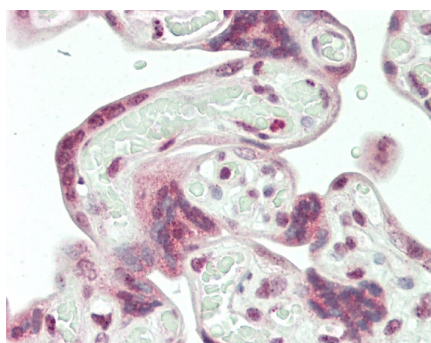
Antony,J.M., AIDS Res. Hum. Retroviruses 22 (12), 1253-1259 (2006)

## Images

---



Western blot analysis of lysate from human brain tissue lysate, using Syncytin(ERVWE1) Antibody(Cat. #AP2716c). AP2716c was diluted at 1:1000 at each lane. A goat anti-rabbit IgG H&L(HRP) at 1:5000 dilution was used as the secondary antibody. Lysate at 35ug per lane.



Formalin-fixed and paraffin-embedded H.placenta tissue reacted with HERV (ERVWE1) Antibody (Center) (Cat#AP2716c).

Please note: All products are 'FOR RESEARCH USE ONLY. NOT FOR USE IN DIAGNOSTIC OR THERAPEUTIC PROCEDURES'.