

M Sema5a Antibody

Purified Rabbit Polyclonal Antibody (Pab)

Catalog # AP2712b

Product Information

Application	WB, E
Primary Accession	Q13591
Other Accession	D3ZTD8 , Q62217
Reactivity	Human, Mouse
Predicted	Rat
Host	Rabbit
Clonality	Polyclonal
Isotype	Rabbit IgG
Calculated MW	120615
Antigen Region	1006-1035

Additional Information

Gene ID	9037
Other Names	Semaphorin-5A, Semaphorin-F, Sema F, SEMA5A, SEMAF
Target/Specificity	This Mouse Sema5a antibody is generated from rabbits immunized with a KLH conjugated synthetic peptide between 1006-1035 amino acids from mouse Sema5a.
Dilution	WB~~1:1000 E~~Use at an assay dependent concentration.
Format	Purified monoclonal antibody supplied in PBS with 0.09% (W/V) sodium azide. This antibody is purified through a protein G column, followed by dialysis against PBS.
Storage	Maintain refrigerated at 2-8°C for up to 2 weeks. For long term storage store at -20°C in small aliquots to prevent freeze-thaw cycles.
Precautions	M Sema5a Antibody is for research use only and not for use in diagnostic or therapeutic procedures.

Protein Information

Name	SEMA5A
Synonyms	SEMAF
Function	Bifunctional axonal guidance cue regulated by sulfated proteoglycans; attractive effects result from interactions with heparan sulfate proteoglycans

(HSPGs), while the inhibitory effects depend on interactions with chondroitin sulfate proteoglycans (CSPGs) (By similarity). Ligand for receptor PLXNB3. In glioma cells, SEMA5A stimulation of PLXNB3 results in the disassembly of F-actin stress fibers, disruption of focal adhesions and cellular collapse as well as inhibition of cell migration and invasion through ARHGDIA-mediated inactivation of RAC1. May promote angiogenesis by increasing endothelial cell proliferation and migration and inhibiting apoptosis.

Cellular Location

Membrane; Single-pass type I membrane protein.

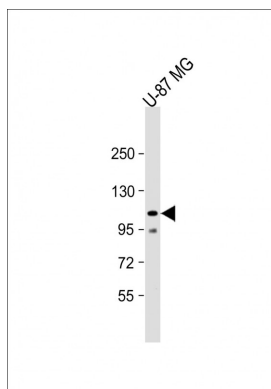
Background

Members of the semaphorin protein family, such as SEMA5A, are involved in axonal guidance during neural development.

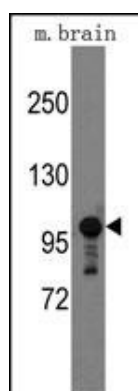
References

Bialecka,M., Neurosci. Lett. 399 (1-2), 121-123 (2006)
Melin,M., Neuropsychobiology 54 (1), 64-69 (2006)

Images



Anti-Semaphorin 5A (C-term) at 1:1000 dilution + U-87 MG whole cell lysate Lysates/proteins at 20 µg per lane. Secondary Goat Anti-Rabbit IgG, (H+L), Peroxidase conjugated at 1/10000 dilution. Predicted band size : 121 kDa Blocking/Dilution buffer: 5% NFDM/TBST.



Western blot analysis of mouse anti-Semaphorin 5A Pab (Cat.#AP2712b) in mouse brain tissue lysates (35ug/lane). Semaphorin 5A(arrow) was detected using the purified Pab.

Please note: All products are 'FOR RESEARCH USE ONLY. NOT FOR USE IN DIAGNOSTIC OR THERAPEUTIC PROCEDURES'.