

M Sema5a Antibody (N-term)

Purified Rabbit Polyclonal Antibody (Pab)

Catalog # AP2712a

Product Information

Application	WB, E
Primary Accession	Q13591
Other Accession	D3ZTD8 , Q62217
Reactivity	Human, Rat, Mouse
Predicted	Rat
Host	Rabbit
Clonality	Polyclonal
Isotype	Rabbit IgG
Calculated MW	120615

Additional Information

Gene ID	9037
Other Names	Semaphorin-5A, Semaphorin-F, Sema F, SEMA5A, SEMAF
Target/Specificity	This Mouse Sema5a antibody is generated from rabbits immunized with a KLH conjugated synthetic peptide selected from the N-terminal region of mouse Sema5a.
Dilution	WB~~1:1000 E~~Use at an assay dependent concentration.
Format	Purified polyclonal antibody supplied in PBS with 0.09% (W/V) sodium azide. This antibody is purified through a protein A column, followed by peptide affinity purification.
Storage	Maintain refrigerated at 2-8°C for up to 2 weeks. For long term storage store at -20°C in small aliquots to prevent freeze-thaw cycles.
Precautions	M Sema5a Antibody (N-term) is for research use only and not for use in diagnostic or therapeutic procedures.

Protein Information

Name	SEMA5A
Synonyms	SEMAF
Function	Bifunctional axonal guidance cue regulated by sulfated proteoglycans; attractive effects result from interactions with heparan sulfate proteoglycans (HSPGs), while the inhibitory effects depend on interactions with chondroitin

sulfate proteoglycans (CSPGs) (By similarity). Ligand for receptor PLXNB3. In glioma cells, SEMA5A stimulation of PLXNB3 results in the disassembly of F-actin stress fibers, disruption of focal adhesions and cellular collapse as well as inhibition of cell migration and invasion through ARHGDIA-mediated inactivation of RAC1. May promote angiogenesis by increasing endothelial cell proliferation and migration and inhibiting apoptosis.

Cellular Location

Membrane; Single-pass type I membrane protein.

Background

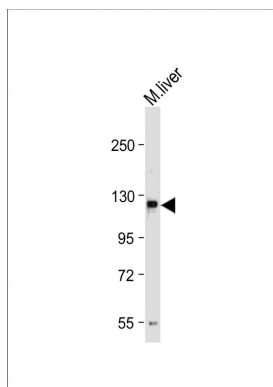
Members of the semaphorin protein family, such as SEMA5A, are involved in axonal guidance during neural development.

References

Bialecka,M., Neurosci. Lett. 399 (1-2), 121-123 (2006)

Melin,M., Neuropsychobiology 54 (1), 64-69 (2006)

Images



Anti-M Sema5a Antibody (N-term) at 1:1000 dilution + Mouse liver tissue lysate Lysates/proteins at 20 µg per lane. Secondary Goat Anti-Rabbit IgG, (H+L), Peroxidase conjugated at 1/10000 dilution. Predicted band size : 121 kDa Blocking/Dilution buffer: 5% NFDM/TBST.

Citations

- [Identification of a novel biomarker, SEMA5A, for non-small cell lung carcinoma in nonsmoking women.](#)

Please note: All products are 'FOR RESEARCH USE ONLY. NOT FOR USE IN DIAGNOSTIC OR THERAPEUTIC PROCEDURES'.