

# PAPSS1 Antibody (N-term K9)

Purified Rabbit Polyclonal Antibody (Pab)

Catalog # AP2607a

## Product Information

---

<b>Application</b>	WB, E
<b>Primary Accession</b>	<a href="#">O43252</a>
<b>Other Accession</b>	<a href="#">Q60967</a> , <a href="#">NP_005434</a>
<b>Reactivity</b>	Human
<b>Predicted</b>	Mouse
<b>Host</b>	Rabbit
<b>Clonality</b>	Polyclonal
<b>Isotype</b>	Rabbit IgG
<b>Antigen Region</b>	1-30

## Additional Information

---

<b>Other Names</b>	Bifunctional 3'-phosphoadenosine 5'-phosphosulfate synthase 1, PAPS synthase 1, PAPSS 1, Sulfurylase kinase 1, SK 1, SK1, Sulfate adenylyltransferase, ATP-sulfurylase, Sulfate adenylyl transferase, SAT, Adenylyl-sulfate kinase, 3'-phosphoadenosine-5'-phosphosulfate synthase, APS kinase, Adenosine-5'-phosphosulfate 3'-phosphotransferase, Adenylylsulfate 3'-phosphotransferase, PAPSS1, ATPSK1, PAPSS
<b>Target/Specificity</b>	This PAPSS1 antibody is generated from rabbits immunized with a KLH conjugated synthetic peptide between 1-30 amino acids from the N-terminal region of human PAPSS1.
<b>Dilution</b>	WB~~1:1000 E~~Use at an assay dependent concentration.
<b>Format</b>	Purified polyclonal antibody supplied in PBS with 0.09% (W/V) sodium azide. This antibody is prepared by Saturated Ammonium Sulfate (SAS) precipitation followed by dialysis against PBS.
<b>Storage</b>	Maintain refrigerated at 2-8°C for up to 2 weeks. For long term storage store at -20°C in small aliquots to prevent freeze-thaw cycles.
<b>Precautions</b>	PAPSS1 Antibody (N-term K9) is for research use only and not for use in diagnostic or therapeutic procedures.

## Protein Information

---

### Background

---

Three-prime-phosphoadenosine 5-prime-phosphosulfate (PAPS) is the sulfate donor cosubstrate for all

sulfotransferase (SULT) enzymes. SULTs catalyze the sulfate conjugation of many endogenous and exogenous compounds, including drugs and other xenobiotics. In humans, PAPS is synthesized from adenosine 5-prime triphosphate (ATP) and inorganic sulfate by 2 isoforms, PAPSS1 and PAPSS2.

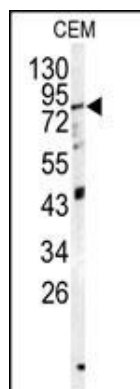
## References

---

- Venkatachalam, K.V., IUBMB Life 55(1):1-11 (2003).  
Xu, Z.H., et al., Biochem. Biophys. Res. Commun. 268(2):437-444 (2000).  
Venkatachalam, K.V., et al., J. Biol. Chem. 273(30):19311-19320 (1998).  
ul Haque, M.F., et al., Nat. Genet. 20(2):157-162 (1998).  
Girard, J.P., et al., FASEB J. 12(7):603-612 (1998).

## Images

---



Western blot analysis of PAPSS1 antibody (N-term K9) (Cat.# AP2607a) in CEM cell line lysates (35ug/lane). PAPSS1 (arrow) was detected using the purified Pab.

## Citations

---

- [The sphingosine 1-phosphate receptor 5 and sphingosine kinases 1 and 2 are localised in centrosomes: possible role in regulating cell division.](#)

Please note: All products are 'FOR RESEARCH USE ONLY. NOT FOR USE IN DIAGNOSTIC OR THERAPEUTIC PROCEDURES'.