

NEFH Antibody (Center)

Purified Rabbit Polyclonal Antibody (Pab)
Catalog # AP22341c

Product Information

Application	WB, E
Primary Accession	P12036
Reactivity	Human, Rat, Mouse
Host	Rabbit
Clonality	polyclonal
Isotype	Rabbit IgG
Clone Names	RB57960
Calculated MW	111838

Additional Information

Gene ID	4744
Other Names	Neurofilament heavy polypeptide, NF-H, 200 kDa neurofilament protein, Neurofilament triplet H protein, NEFH, KIAA0845, NFH
Target/Specificity	This NEFH antibody is generated from a rabbit immunized with a KLH conjugated synthetic peptide between 328-362 amino acids of human NEFH.
Dilution	WB~~1:500-1:2000 E~~Use at an assay dependent concentration.
Format	Purified polyclonal antibody supplied in PBS with 0.09% (W/V) sodium azide. This antibody is purified through a protein A column, followed by peptide affinity purification.
Storage	Maintain refrigerated at 2-8°C for up to 2 weeks. For long term storage store at -20°C in small aliquots to prevent freeze-thaw cycles.
Precautions	NEFH Antibody (Center) is for research use only and not for use in diagnostic or therapeutic procedures.

Protein Information

Name	NEFH
Synonyms	KIAA0845, NFH
Function	Neurofilaments usually contain three intermediate filament proteins: NEFL, NEFM, and NEFH which are involved in the maintenance of neuronal caliber. NEFH has an important function in mature axons that is not subserved by the two smaller NF proteins. May additionally cooperate with the neuronal

intermediate filament proteins PRPH and INA to form neuronal filamentous networks (By similarity).

Cellular Location

Cytoplasm, cytoskeleton. Cell projection, axon
{ECO:0000250|UniProtKB:P19246}

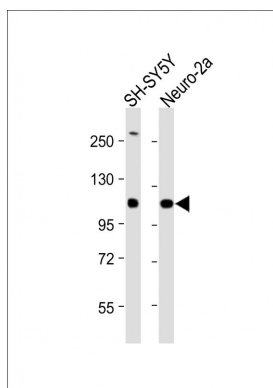
Background

Neurofilaments usually contain three intermediate filament proteins: L, M, and H which are involved in the maintenance of neuronal caliber. NF-H has an important function in mature axons that is not subserved by the two smaller NF proteins.

References

- Lees J.F.,et al.EMBO J. 7:1947-1955(1988).
Zhu Y.,et al.Beijing Yi Ke Da Xue Xue Bao 31:531-531(1999).
Nagase T.,et al.DNA Res. 5:355-364(1998).
Ota T.,et al.Nat. Genet. 36:40-45(2004).
Dunham I.,et al.Nature 402:489-495(1999).

Images



All lanes : Anti-NEFH Antibody (Center) at 1:500-1:2000 dilution Lane 1: SH-SY5Y whole cell lysate Lane 2: Neuro-2a whole cell lysate Lysates/proteins at 20 μ g per lane. Secondary Goat Anti-Rabbit IgG, (H+L), Peroxidase conjugated at 1/10000 dilution. Predicted band size : 112 kDa Blocking/Dilution buffer: 5% NFDM/TBST.

Please note: All products are 'FOR RESEARCH USE ONLY. NOT FOR USE IN DIAGNOSTIC OR THERAPEUTIC PROCEDURES'.